

小包裝 抗體超值特惠

2023/5/15–6/29 | 活動詳情請洽 Abcam 台灣代理伯森生技



10 μ l trial size
小包裝抗體 **5折**

Antibody panel
小包裝抗體組合包 **9折**

買大包裝一抗，加購小包裝抗體只要 **壹仟元***

*每支大包裝抗體限加購壹支小包裝抗體 | 小包裝抗體加購優惠與買一抗送 WB 試劑優惠僅可擇一使用，不得併行

Trial-size antibodies

為了方便科研人員測試篩選出於自身研究中效能表現最佳的抗體，Abcam 貼心推出 10 μ l 小包裝。只要在抗體產品頁面的「Product Size」選項中有 **10 μ l Trial Size** 即符合本次五折優惠條件！您也可以請 [伯森業務專員](#) 直接幫您找尋感興趣的測試用小包裝抗體。



從 Abcam 網站搜尋結果中也能直接看出該支抗體是否有 10 μ l 小包裝

Antibody panels

Antibody Panel 小包裝抗體組合包讓您可以更經濟實惠的方式偵測多種研究標的。收錄 Cancer, Exosome, Immunology, Neuroscience, Stem cell... 等研究主題最核心重要的研究標的抗體，讓您的實驗更加便利且全面！以下為您列出最受歡迎的幾個熱門商品，完整產品明細請參閱《[Abcam 小包裝抗體組合包產品目錄](#)》，或洽詢 [伯森業務專員](#)。

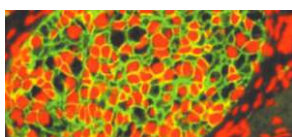


Antibody Panel 熱門商品

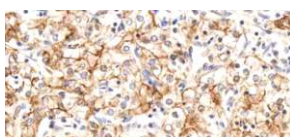
Antibody Panel and Panel Contents	Reactivity				Application	Size	Cat. No.
	Host	Hu	Ms	Rt			
Epithelial to Mesenchymal Transition (EMT) Marker Panel (ab216833)							
Anti-E Cadherin antibody [EP700Y]	R	Rb	✓		WB IHC ICC/IF FCM	10 μ l	ab40772
Anti-N Cadherin antibody [EPR1791-4]	K R	Rb	✓	✓	WB IHC	10 μ l	ab76011
Anti-SNAIL + SLUG antibody		Rb	✓		WB IHC	10 μ g	ab85936
Anti-Vimentin antibody [EPR3776]	K R	Rb	✓	✓	WB IHC ICC/IF FCM	10 μ l	ab92547
Anti-Rabbit IgG H&L (HRP)		Gt			WB IHC	100 μ g	ab205718



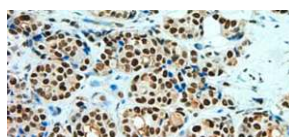
ab216833



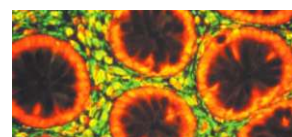
ab40772
Cited in over 465 publications



ab76011
Cited in over 165 publications



ab85936
Cited in over 30 publications



ab92547
Cited in over 1159 publications

〈續下頁〉



Antibody Panel and Panel Contents	Reactivity				Application	Size	Cat. No.
	Host	Hu	Ms	Rt			
Pro-Apoptosis Bcl Family Antibody Sampler Panel (ab228527)							
Anti-Bad antibody [Y208]		Rb	✓	✓	WB IHC ICC/IF FCM	10 µl	ab32445
Anti-Bax antibody [E63]		Rb	✓	✓	WB IHC	10 µl	ab32503
Anti-Bcl-2 antibody [EPR17509]		Rb	✓	✓	WB IHC FCM	10 µl	ab182858
Anti-Bcl-XL antibody [E18]		Rb	✓	✓	WB IHC ICC/IF FCM	10 µl	ab32370
Anti-MCL1 antibody [Y37]		Rb	✓		WB IHC ICC/IF FCM	10 µl	ab32087
Anti-Rabbit IgG H&L (HRP)		Gt			WB IHC	100 µg	ab205718
Autophagy Antibody Sampler Panel (ab228525)							
Anti-APG5L/ATG5 antibody [EPR1755(2)]		Rb	✓	✓	WB IHC ICC/IF	20 µl	ab108327
Anti-ATG16L1 antibody [EPR15638]		Rb	✓	✓	WB IHC	20 µl	ab187671
Anti-ATG4B antibody [EPR6436(2)]		Rb	✓	✓	WB FCM	20 µl	ab154843
Anti-ATG9A antibody [EPR2450(2)]		Rb	✓	✓	WB IHC ICC/IF FCM	20 µl	ab108338
Anti-Beclin 1 antibody [EPR19662]		Rb	✓	✓	WB	20 µl	ab207612
Anti-LC3B antibody [EPR18709]		Rb	✓	✓	WB ICC/IF	20 µl	ab192890
Exosome Panel (Calnexin, CD9, CD63, CD81, Hsp70, TSG101) (ab275018)							
Anti-Calnexin antibody [EPR3633(2)] - ER Membrane Marker		Rb	✓	✓	WB IHC FCM	20 µl	ab133615
Anti-CD9 antibody [EPR23105-125]		Rb	✓		WB IHC FCM	20 µl	ab263019
Anti-CD63 antibody [EPR5702]		Rb	✓		WB IHC	20 µl	ab134045
Anti-CD81 antibody [EPR4244]		Rb	✓	✓	WB	20 µl	ab109201
Anti-Hsp70 antibody [EPR16892]		Rb	✓	✓	WB IHC ICC/IF FCM	20 µl	ab181606
Anti-TSG101 antibody [EPR1730(B)]		Rb	✓	✓	WB IHC ICC/IF FCM	20 µl	ab125011
DNA Damage Kinases Panel (ATM, ATM pS1981, ATR, ATR pS428, DNA-PKcs, DNA-PKcs pS2056) (ab103970)							
Anti-ATM (phospho S1981) antibody [10H11.E12]		Ms	✓		WB IHC FCM	25 µg	ab36810
Anti-ATM antibody [EPR17059]		Rb	✓	✓	WB	20 µl	ab199726
Anti-ATR (phospho S428) antibody [EPR2184]		Rb	✓		WB IHC	10 µl	ab178407
Anti-ATR antibody		Rb	✓		WB	25 µl	ab2905
Anti-DNA PKcs (phospho S2056) antibody [EPR5670]		Rb	✓		WB IHC ICC/IF	20 µl	ab124918
Anti-DNA PKcs antibody [Y393]		Rb	✓		WB IHC ICC/IF	20 µl	ab32566
Human Embryonic Stem Cell Marker Panel (Oct4, Nanog, Tra-1-60, SOX2 and SSEA4) (ab109884)							
Anti-Nanog antibody [EPR2027(2)]		Rb	✓		WB IHC ICC/IF FCM	50 µl	ab109250
Anti-Oct4 antibody		Rb	✓	✓	WB ICC/IF	50 µg	ab19857
Anti-SOX2 antibody		Rb	✓	✓	WB IHC ICC/IF	50 µg	ab97959
Anti-SSEA4 antibody [MC813-70]		Ms	✓		ICC/IF FCM	50 µl	ab16287
Anti-TRA-1-60 (R) antibody [TRA-1-60]		Ms	✓		WB	50 µg	ab16288
Neural Stem Cell Marker (Nestin, SOX2, Occludin, E Cadherin, Hes1, Notch1) Antibody Panel - Human (ab254027)							
Anti-Nestin antibody [SP103]		Rb	✓		WB IHC ICC/IF FCM	20 µl	ab105389
Anti-SOX2 antibody [EPR3131]		Rb	✓	✓	WB IHC ICC/IF	20 µl	ab92494
Anti-Occludin antibody [EPR20992]		Rb	✓	✓	WB IHC ICC/IF FCM	20 µl	ab216327
Anti-E Cadherin antibody [EP700Y] - Intercellular Junction Marker		Rb	✓		WB IHC ICC/IF FCM	20 µl	ab40772
Anti-Hes1 antibody [EPR4226]		Rb	✓	✓	WB IHC ICC/IF FCM	20 µl	ab108937
Anti-Notch1 antibody [EP1238Y]		Rb	✓	✓	WB IHC ICC/IF FCM	20 µl	ab52627
PD-L1 Antibody Panel (28-8, 73-10, SP142, CAL10) (ab239749)							
Anti-PD-L1 antibody [73-10]		Rb	✓		WB IHC ICC/IF FCM	10 µl	ab228415
Anti-PD-L1 antibody [28-8]		Rb	✓		WB IHC ICC/IF FCM	10 µl	ab205921
Anti-PD-L1 antibody [SP142] - C-terminal		Rb	✓		IHC ICC/IF	25 µl	ab228462
Anti-PD-L1 antibody [CAL10]		Rb	✓		WB IHC ICC/IF	10 µl	ab237726

基因剔除驗證 (Knockout (KO) Validated) 重組抗體 (Recombinant antibodies) RabMab® 兔單株抗體 (RabMab® rabbit monoclonal antibodies)