

# Knockout Cell Lysates

- 萃取自 CRISPR/Cas9 基因剔除癌細胞株
- 採用 Sanger 定序法嚴格驗證把關剔除效果
- 產品選擇業界第一，超過 2800 種 Knockout cell lysates 品項，並具有多種細胞株選項  
Hela, HEK293T, A549, HCT116, Hep G2, MCF...
- 隨貨均附相對應的 Wild type lysates，可在一致的細胞背景上進行比對

## Allel-1: 1 bp deletion in exon2

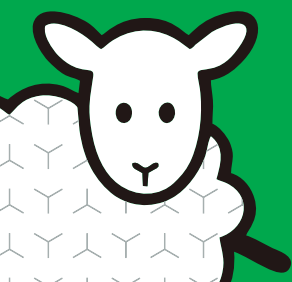
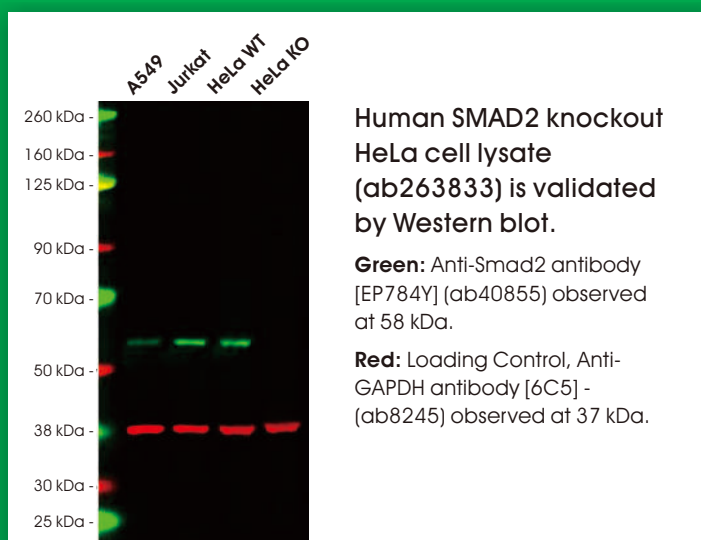
Mut GGAGAGCAGAATGGGCAGGAAGA-AAGTGGTGTGAGAAAGCAGTGAAA  
 WT GGAGAGCAGAATGGGCAGGAAGAAAAGTGGTGTGAGAAAGCAGTGAAA

## Allel-2: 1 bp insertion in exon2

Mut GGAGAGCAGAATGGGCAGGAAGACAAAGTGGTGTGAGAAAGCAGTGAA  
 WT GGAGAGCAGAATGGGCAGGAAGA AAAGTGGTGTGAGAAAGCAGTGAA

Human SMAD2 knockout HeLa cell lysate (ab263833) is validated by Sanger sequencing.

Mutation: 1 bp deletion in exon2 and 1 bp insertion in exon2.  
 Editing tool: CRISPR/Cas9. Cell line: Diploid of HeLa cell.



產品諮詢請洽 Abcam 台灣代理 — 伯森生技  
 掃描瀏覽完整 Knockout Cell Lysates 產品品項選擇

