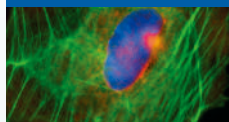


ibidi® 細胞影像實驗耗材

第二件特價6折 2019/4/1-6/20

免疫螢光染色 IMMUNOFLUORESCENCE



3 Well | 8 Well | 12 Well Chamber, removable

Removable silicone chambers for cell culture and immunofluorescence, suitable for upright and inverted microscopy and long-term storage



μ-Slide 2 Well | 4 Well | 8 Well

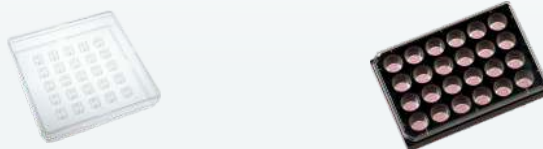
Chambered coverslips that combine optimal conditions for cell culture, immunofluorescence and high-resolution microscopy; available with an ibidi Polymer Coverslip or a glass bottom

細胞傷口癒合 WOUND HEALING & MIGRATION



Culture-Insert 2 Well | 3 Well | 4 Well

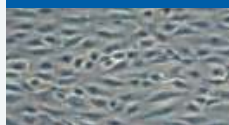
Silicone inserts with a defined cell-free gap for wound healing, migration, 2D invasion assays, and co-cultivation of cells; available as individual inserts in a μ-Dish or as 25 pieces in a transport dish for self-insertion



Culture-Insert 2 Well 24

The complete solution for high throughput wound healing and migration experiments

流體環境培養 CELL CULTURE UNDER FLOW



μ-Slide I Luer

Flow channel slides, available with different heights and coatings



μ-Slide VI^{0.5} Glass Bottom | μ-Slide VI^{0.1} | μ-Slide VI^{0.4}

Slides with 6 channels for parallel flow assays with minimal amount of cells, medium, and supplements, available with different channel heights and coatings; with glass or ibidi Polymer Coverslip bottom



μ-Slide III^{3D} Perfusion

A slide for optimal nutrient supply during long-term cultivation of cells or organoids in 3D matrices

細胞趨化 CHEMOTAXIS



μ-Slide Chemotaxis

Specialized geometry for assays with fast or slow migrating cells in 2D culture or 3D gel matrices

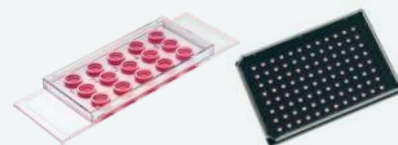
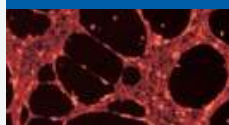
高通量 顯微影像觀察 HIGH THROUGHPUT



μ-Plate 24 Well | 96 Well

Plates with a flat, clear bottom for brilliant images in high throughput cell microscopy applications

細胞血管新生 ANGIOGENESIS



μ-Slide Angiogenesis | μ-Plate Angiogenesis 96 Well

A slide optimized for tube formation assays, 3D cell culture and immunofluorescence staining, also available in a 96 well format for high throughput applications



掃描瀏覽 ibidi
活細胞影像實驗
耗材詳細說明



活動詳情與詳細產品資訊，請洽 ibidi 台灣獨家代理 — 伯森生技

※本活動可混搭不同系列產品，以價低者為6折。本活動不得與其他優惠併用。

伯森生技

網址 blossombio.com
客服 0800-059668

台北 (02) 2788-2121 新竹 (037) 581-106
台中 (04) 2323-3939 南部 (06) 235-6628

