

STEM CELL MARKERS 產品目錄

為全球生命科學研究者提供高品質的抗體，試劑盒，重組蛋白和各種試劑。Abcam 立志於幫助科學家們更快獲得可靠結果，達成科學使命。

Target	Uniprot	Primary ab	ELISA	Proteins	Panel
常見胚胎幹細胞標誌 Major embryonic stem cell markers					
Cell Surface Pluripotency Markers					
Oct4	Q01860	P R	ELISA SSE	R A	ab109884
Sox2	P48431	P R		R A	ab109884
Nanog	Q9H9S0	P R		R A	ab109884
Sall4	Q9UJQ4	P R		R	
Dax1	P51843	P R		R	
Tbx3	O15119	P R		R	
Tcl1	P56279	P R		R	
Cripto-1	P13385	P R		R A	
GDF1	P27539	P R		R	
GDF3	Q9NR23	P R		R A	
Transcription Factors					
Oct4	Q01860	P R	ELISA SSE	R A	ab109884
c-Myc	P01106	P R		R A	
Sox2	P48431	P R		R A	ab109884
Klf4	O43474	P R		R A	
Sox18	P35713	P R		R	
Nanog	Q9H9S0	P R		R A	ab109884
Tcl1	P56279	P R		R	
Sall4	Q9UJQ4	P R		R	
Mycn	P04198	P R		R	
Induced (pluripotent stem) PS cell markers					
CD13	P15144	P R		R A	
Nanog	Q9H9S0	P R		R A	ab109884
Germ cell markers during specification					
PRDM1/Blimp1	O75626	P R		R	
Dazl	Q92904	P R		R	
MVH	Q9NQI0	P R		R	
Oct4	Q01860	P R	ELISA SSE	R A	ab109884
c-kit	P10721	P R	ELISA	R A	
The ectoderm, and endoderm markers					
Otx2	P32243	P R		R	
Chordin	Q9H2X0	P	ELISA		
p63/TP73L	Q9H3D4	P R	ELISA SSE		

**SimpleStep ELISA®
試劑盒**

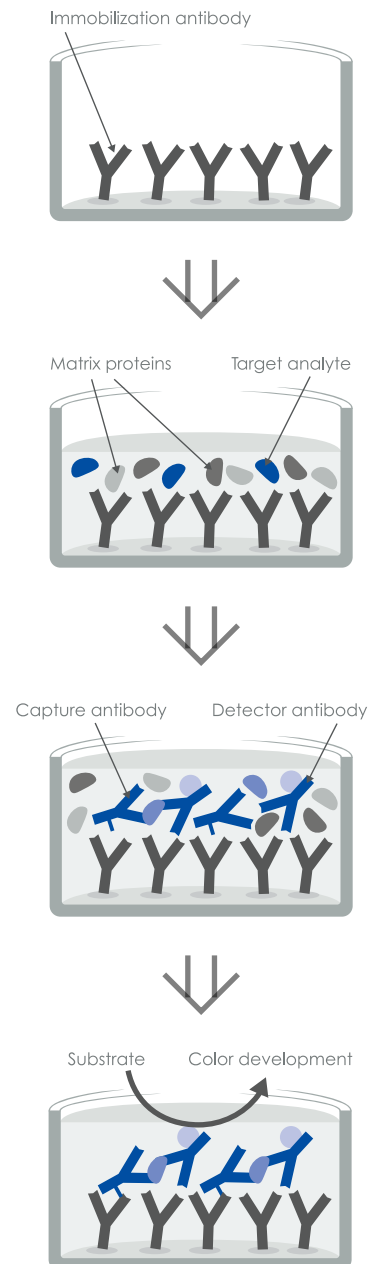
- 90分鐘可得結果
- 高專一性抗體對
- 操作快速
- 低誤差，可重複性高

P - Primary antibodies
 P R - Recombinant monoclonal
 ELISA - ELISA kit
 SSE - SimpleStep ELISA® kit
 R - Recombinant
 R A - Active recombinant protein



Target	Uniprot	Primary ab	ELISA	Proteins	Panel
FGF-8	P55075	P R		R A	
Pax2	Q02962	P R		R	
Pax6	P26367	P R		R	
Noggin	Q13253	P R		R A	
常見造血幹細胞標誌 Major hematopoietic stem cell markers					
CD48	P09326	P R	ELISA	R A	
Slamf1/CD150	Q13291	P R	ELISA	R	
CD244	Q9BZW8	P	ELISA	R A	
CD34	P28906	P R		R	
CD38	P28907	P R		R	
CD90 / Thy1	P04216	P R		R	ab93759
c-kit	P10721	P R	ELISA	R A	
lin	Q9H9Z2	P R		R A	
CD135	P36888	P R		R A	
Slamf1/CD150	Q13291	P R	ELISA	R	
Mac-1/CD11b	P11215	P R		R	
CD4	P01730	P R	ELISA SSE	R A	
常見腫瘤幹細胞標誌 Major cancer stem cell markers					
CD44	P16070	P R	ELISA	R	ab93759
CD133	O43490	P R		R	
CD24	P25063	P R		R	
CD90 / Thy1	P04216	P R		R	ab93759
p75 NGFR/CD271	P08138	P R	ELISA	R A	
Integrin alpha 6/CD49f	P23229	P R		R	
CD13	P15144	P R		R A	
CK5	P13647	P R	ELISA SSE	R	
CK10	P13645	P R		R	
CK15	P19012	P R		R	
CK8	P05787	P R		R	
CK18	P05783	P R	ELISA SSE	R	
CK14	P02533	P R	ELISA SSE	R	
ALDH1	P00352	P R	ELISA SSE	R	
常見心臟幹細胞標誌 Major cardiac stem cell markers					
CD34	P28906	P R		R	
CD45	P08575	P R		R A	ab93759
CD133	O43490	P R		R	
67LR/RPSA	P08865	P R		R	
CD31	P16284	P R	ELISA SSE	R A	
TGF-β1	P01137	P R	ELISA	R A	
VEGFR2/KDR	P35968	P R	ELISA SSE	R A	
c-kit	P10721	P R	ELISA	R A	
Integrin beta-1/CD29	P05556	P R		R	ab93759

90分鐘SSE原理



P - Primary antibodies
P R – Recombinant monoclonal
ELISA – ELISA kit
SSE – SimpleStep ELISA® kit
R – Recombinant
R A – Active recombinant protein

Target	Uniprot	Primary ab	ELISA	Proteins	Panel
CD105	P17813	P R	ELISA SSE	R A	ab93758
CD90 / Thy1	P04216	P R		R	ab93759
Cardiac troponin I	P19429	P R	ELISA SSE	R	
Nkx2.5	P52952	P R		R	
Isl1	P61371	P R		R	
Oct4	Q01860	P R	ELISA SSE	R A	ab109884

常見骨骼前驅細胞標誌 Major osteoprogenitor cell markers

Gremlin 1	O60565	P		R A	
TGF-β1	P01137	P R	ELISA	R A	
FGF-2	P09038	P R	ELISA	R A	
BMP-2	P12643	P R	ELISA	R A	
ALPP	P05187	P R		R	
CD146/MUC18	P43121	P R		R	
Collagen I	P02452	P R	ELISA SSE	R	
Collagen II	P02458	P R		R	
RUNX2	Q13950	P R		R	
Decorin	P07585	P	ELISA	R A	
Tpo	P07202	P R		R A	
RUNX2	Q13950	P R		R	
ALPP	P05187	P R		R	
Osteocalcin	P02818	P R	ELISA SSE	R	
BAP1	Q92560	P		R A	
Osteopontin	P10451	P R	ELISA SSE	R	
BAP31	P51572	P R		R	
Sp7/Osterix	Q8TDD2	P R		R	
Collagen I	P02452	P R	ELISA SSE	R	
Fibronectin	P02751	P R	ELISA SSE	R	
SPARC	P09486	P R	ELISA	R A	
IGFBP-3	P17936	P R	ELISA	R A	
TGF-β1	P01137	P R	ELISA	R A	
RANKL	O14788	P	ELISA	R A	
M-CSF	P09603	P R	ELISA	R A	
Sclerostin	Q9BQB4	P	ELISA SSE	R A	
DKK3	Q9UBP4	P R	ELISA SSE	R A	

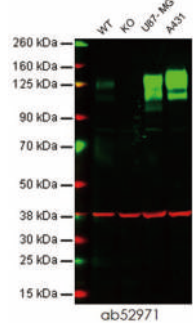
常見肌肉前驅細胞標誌 Major myogenic precursor cell markers

CD56/NCAM1	P13591	P R	ELISA	R	
CD146/MUC18	P43121	P R		R	
VE-Cadherin	P33151	P R	ELISA SSE	R	
alpha-smooth muscle actin	P12814	P R		R	
FABP3	P05413	P R		R	
Desmin	P17661	P R		R	
Myosin-9	P35579	P R		R	

RabMAb[®] 重組兔單株抗體

1 高專一性

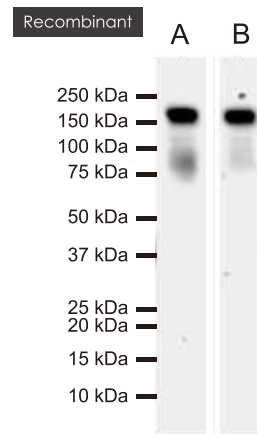
KO VALIDATED



Western blot - Anti-Integrin beta 1 antibody [EP1041Y] (ab52971)

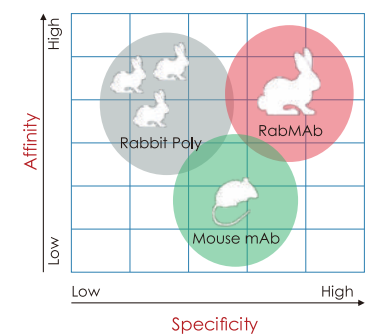
Lanes 1 - 4: Merged signal (red and green). Green - ab52971 observed at 140 kDa. Red signal from loading control - ab8245 observed at 37 kDa.

2 高一致性和可重複性



Western blot analysis of U937 cells with ab52971 at 1/1000.
A. Anti-Integrin beta 1, 1 ug/ml (ab52971 batch 1)
B. Anti-Integrin beta 1, 1 ug/ml (ab52971 batch 2)
Both batches showed consistent results.

3 高親和性/靈敏度



Target	Uniprot	Primary ab	ELISA	Proteins	Panel
常見神經幹細胞標誌 Major neural stem cell markers					
CD133	O43490	P R		R	
CD24	P25063	P R		R	
CD45	P08575	P R		R A	ab93759
CD34	P28906	P R		R	
Sox2	P48431	P R		R A	ab109884
ABCG2/CD338	Q9UNQ0	P R		R	
FGFR4	P22455	P R		R A	
常見間質幹細胞標誌 Major mesenchymal stem cell markers					
CD10/Nepilysin	P08473	P R	ELISA SSE	R A	
CD13	P15144	P R		R A	
CD73	P21589	P R	ELISA	R A	
CD105	P17813	P R	ELISA SSE	R A	ab93758
p75 NGFR/CD271	P08138	P R	ELISA	R A	
CD140b/PDGFRB	P09619	P R	ELISA	R A	
HER-2/erbB2 (CD340)	P04626	P R	ELISA	R A	
Integrin beta-1/CD29	P05556	P R		R	ab93759
CD90 / Thy1	P04216	P R		R	ab93759
CD146/MUC18	P43121	P R		R	
Oct4	Q01860	P R	ELISA SSE	R A	ab109884
常見皮膚幹細胞標誌 Major skin stem cell markers					
CK15	P19012	P R		R	
CD34	P28906	P R		R	
Follistatin	P19883	P R	ELISA SSE	R A	
p63/TP73L	Q9H3D4	P R	ELISA SSE		
Integrin alpha 6/CD49f	P23229	P R		R	
Tenascin C	P24821	P R	ELISA	R	
EGFR	P00533	P R	ELISA SSE	R A	
IGF1R/CD221	P08069	P R	ELISA	R A	
DLL1	O00548	P	ELISA	R	
TGFBR2/TBRII	P37173	P R		R	
常見脂肪幹細胞標誌 Major adipose-derived stem cell markers					
CD44	P16070	P R	ELISA	R	ab93759
ICAM-1/CD54	P05362	P R	ELISA SSE	R A	
CD34	P28906	P R		R	
常見腸幹細胞標誌 Major intestinal stem cell markers					
Gremlin 1	O60565	P		R A	
Bmi1	P35226	P R		R	
Tert	O14746	P R		R	
Hopx	Q9BPY8	P R		R	

P - Primary antibodies
 P R - Recombinant monoclonal
 ELISA - ELISA kit
 SSE - SimpleStep ELISA® kit
 R - Recombinant
 R A - Active recombinant protein



最新優惠訊息與詳細產品資訊，請洽 Abcam 台灣代理 — 伯森生技

伯森生技網站 www.blossombio.com 伯森生技客服專線 (北部) 0800-059668 (南部) 0800-259988