

# 抗體組合包



## 高 CP 值

Abcam 嚴選推出的小包裝抗體組合包，讓您以更經濟實惠的方式偵測多種研究標的！

## 優質便利

針對 Neuroscience, Cancer, Stem Cells 等熱門研究主題，收錄最核心重要的研究標的抗體，讓實驗更加便利且全面！

## 文獻豐富

所收錄的抗體擁有豐富的文獻紀錄與公開透明的使用者心得評論，讓您買的安心、用的安心。

### Abcam Antibody Panels

◀ 中文目錄索引 ▶

產品資訊與最新優惠訊息，請洽  
Abcam 台灣代理 — 伯森生技。

**P1** Cancer

**P2** Cell Death | Neuroscience

**P3** Neuroscience

**P4** Cell Cycle & Signaling

**P5** Stem Cells

**P6** Immunology | Epigenetics

**P7** Epigenetics

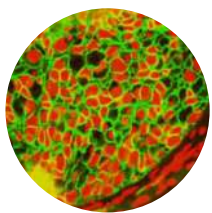
**P8** WB Loading Control

## Cancer

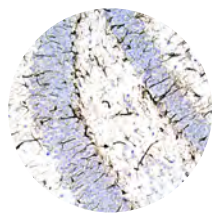
Antibody Panel and Components	Reactivity			Application	Size	Cat. No.
	Host	Hu	Ms			
<b>Epithelial to Mesenchymal Transition (EMT) Marker Panel (ab216833)</b>						
Anti-E Cadherin antibody [EP700Y] ●	Rb	•		WB IHC ICC/IF FCM	10 µl	ab40772
Anti-N Cadherin antibody [EPR1791-4] ●	Rb	•	•	WB IHC	10 µl	ab76011
Anti-SNAIL + SLUG antibody	Rb	•		WB IHC	10 µg	ab85936
Anti-Vimentin antibody [EPR3776] ●■	Rb	•	•	WB IHC ICC/IF FCM	10 µl	ab92547
Goat Anti-Rabbit IgG H&L (HRP)	Gt			WB IHC	100 µg	ab205718

● RabMAb® ■ KO Validated

FCM = Flow Cytometry, Hu = Human, Gt = Goat, Ms = Mouse, Rb = Rabbit, Rt = Rat



IHC - Anti-E Cadherin antibody [EP700Y] (ab40772)



IHC - Anti-Vimentin antibody [EPR3776]

### Citations

Anti-E Cadherin antibody [EP700Y] (ab40772)	Anti-N Cadherin antibody [EPR1791-4] (ab76011)	Anti-SNAIL + SLUG antibody (ab85936)	Anti-Vimentin antibody [EPR3776] (ab92547)
<ul style="list-style-type: none"> <li>• Sci Rep 8:1076 (2018). PubMed: 29348629</li> <li>• Am J Transl Res 9:1402-1409 (2017). PubMed: 28386365</li> </ul>	<ul style="list-style-type: none"> <li>• J Cell Mol Med 22:1190-1201 (2018). PubMed: 29077259</li> <li>• Cancer Sci 109:354-362 (2018). PubMed: 29160937</li> </ul>	<ul style="list-style-type: none"> <li>• Oncol Lett 14:1697-1702 (2017). PubMed: 28789397</li> <li>• Hepatology 63:1256-71 (2016). PubMed: 26698646</li> </ul>	<ul style="list-style-type: none"> <li>• Int J Mol Med 41:659-668 (2018). PubMed: 29207055</li> <li>• PLoS One 13:e0189433 (2018). PubMed: 29293543</li> </ul>



# Cell Death

## Antibody Panel and Components

Reactivity  
Host Hu Ms Rt Application Size Cat. No.

### Autophagy Antibody Sampler Panel (ab228525)

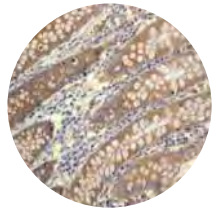
Anti-APG5L/ATG5 antibody [EPR1755(2)] ●■	Rb	• • •	WB IHC ICC/IF	10 µl	ab108327
Anti-ATG16L1 antibody [EPR15638] ●■	Rb	• • •	WB IHC	10 µl	ab187671
Anti-ATG4B antibody [EPR6436(2)] ●■	Rb	• • •	WB FCM	10 µl	ab154843
Anti-ATG9A antibody [EPR2450(2)] ●■	Rb	• • •	WB IHC ICC/IF FCM	10 µl	ab108338
Anti-Beclin 1 antibody [EPR19662] ●	Rb	• • •	WB ICC/IF	10 µl	ab207612
Anti-LC3B antibody [EPR18709] ●■	Rb	• • •	WB ICC/IF	10 µl	ab192890
Goat Anti-Rabbit IgG H&L (HRP)	Gt		WB IHC	100 µg	ab205718

### Pro-Apoptosis Bcl Family Antibody Sampler Panel (ab228527)

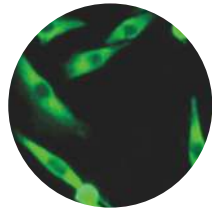
Anti-Bad antibody [Y208] ●■	Rb	• • •	WB IHC ICC/IF FCM	10 µl	ab32445
Anti-Bax antibody [E63] ●■	Rb	• • •	WB IHC	10 µl	ab32503
Anti-Bcl-2 antibody [EPR17509] ●■	Rb	• • •	WB IHC ICC/IF FCM	10 µl	ab182858
Anti-Bcl-XL antibody [E18] ●	Rb	• • •	WB IHC ICC/IF FCM	10 µl	ab32370
Anti-MCL1 antibody [Y37] ●	Rb	• • •	WB IHC ICC/IF FCM	10 µl	ab32087
Anti-PUMA antibody [EP512Y] ●	Rb	•	WB IHC ICC/IF FCM	10 µl	ab33906
Goat Anti-Rabbit IgG H&L (HRP)	Gt		WB IHC	100 µg	ab205718

● RabMAb® ■ KO Validated

FCM = Flow Cytometry, Hu = Human, Gt = Goat, Ms = Mouse, Rb = Rabbit, Rt = Rat



IHC - Anti-ATG9A antibody [EPR2450(2)] (ab108338)



ICC/IF - Anti-PUMA antibody [EP512Y] (ab33906)

### Citations

Anti-ATG9A antibody [EPR2450(2)] (ab108338)	Anti-Bax antibody [E63] (ab32503)	Anti-Beclin 1 antibody [EPR19662] (ab207612)	Anti-PUMA antibody [EP512Y] (ab33906)
<ul style="list-style-type: none"> <li>EMBO J 37:235-254 (2018). PubMed: 29158324</li> <li>Cell Res 27:184-201 (2017). PubMed: 27934868</li> </ul>	<ul style="list-style-type: none"> <li>Environ Toxicol 33:52-62 (2018). PubMed: 29044990</li> <li>Cell Death Dis 9:172 (2018). PubMed: 29416039</li> </ul>	<ul style="list-style-type: none"> <li>Sci Rep 8:1552 (2018). PubMed: 29367610</li> <li>Mol Med Rep 15:2097-2105 (2017). PubMed: 28259912</li> </ul>	<ul style="list-style-type: none"> <li>J Dermatol Sci N/A:N/A (2018). PubMed: 29307600</li> <li>Oncotarget 8:61057-61071 (2017). PubMed: 28977846</li> </ul>

# Neuroscience

## Antibody Panel and Components

Reactivity  
Host Hu Ms Rt Application Size Cat. No.

### Astrocyte Marker Panel (ab226481)

Anti-ALDH1L1 antibody [EPR12743(B)] ●	Rb	• • •	WB IHC	10 µl	ab177463
Anti-EAAT1 antibody [EPR12686] ●	Rb	• • •	WB IHC	10 µl	ab181036
Anti-EAAT2 antibody [EPR19798] ●	Rb	• •	WB IHC	10 µl	ab205248
Anti-GFAP antibody [EPR1034Y] ●	Rb	• • •	WB IHC	10 µl	ab68428
Goat Anti-Rabbit IgG H&L (HRP)	Gt	• • •	WB IHC	100 µg	ab205718

### Conformation-Specific Amyloid beta Antibody Sampler Panel (ab218719)

Anti-Amyloid Fibril antibody [mOC116] - Conformation-Specific ●	Rb	•	IHC	10 µl	ab205342
Anti-Amyloid Fibril antibody [mOC22] - Conformation-Specific ●	Rb	•	IHC	10 µl	ab205339
Anti-Amyloid Fibril antibody [mOC78] - Conformation-Specific ●	Rb	•	IHC	10 µl	ab205341
Anti-Amyloid Fibril antibody [mOC87] - Conformation-Specific ●	Rb	• •	IHC	10 µl	ab201062
Anti-beta Amyloid 1-42 antibody [mOC23] - Conformation-Specific ●	Rb	•	IHC	10 µl	ab205340
Anti-beta Amyloid 1-42 antibody [mOC31] - Conformation-Specific ●	Rb	• •	IHC	10 µl	ab201059
Anti-beta Amyloid 1-42 antibody [mOC64] - Conformation-Specific ●	Rb	• • •	WB IHC	10 µl	ab201060
Anti-beta Amyloid 1-42 antibody [mOC98] - Conformation-Specific ●	Rb	• • •	WB IHC	10 µl	ab201061
Goat Anti-Rabbit IgG H&L (HRP)	Gt		WB IHC	100 µg	ab205718

FCM = Flow Cytometry, Hu = Human, Gt = Goat, Ms = Mouse, Rb = Rabbit, Rt = Rat

## Mature Neuron Marker Panel (ab218257)

Anti-MAP2 antibody [EPR19691] ●	Rb	• • •	IHC	10 µl	ab183830
Anti-NeuN antibody [EPR12763] ●	Rb	• • •	WB IHC ICC/IF FCM	10 µl	ab177487
Anti-Neurofilament heavy polypeptide antibody [EPR20020] ●	Rb	• • •	WB IHC ICC/IF	10 µl	ab207176
Anti-PSD95 antibody [EP2652Y] ●	Rb	• • •	WB IHC ICC/IF FCM ChIP	10 µl	ab76115
Anti-Synaptophysin antibody [YE269] ●	Rb	• • •	WB IHC ICC/IF	10 µl	ab32127
Goat Anti-Rabbit IgG H&L (HRP)	Gt		WB IHC	100 µg	ab205718

## Microglial Marker Panel (ab226482)

Anti-CD11b antibody [EPR1344] ●	Rb	• • •	WB IHC	10 µl	ab133357
Anti-CD45 antibody [EP322Y] ●	Rb	•	WB IHC ICC/IF FCM	10 µl	ab40763
Anti-Iba1 antibody [EPR16588] ●	Rb	• • •	WB IHC	10 µl	ab178846
Anti-TMEM119 antibody [28-3] ●	Rb	•	IHC	10 µl	ab209064
Goat Anti-Rabbit IgG H&L (HRP)	Gt		WB IHC	100 µg	ab205718

## Parkinson's Disease Research Antibody Panel (ab226767)

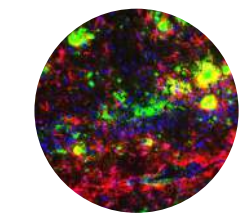
Anti-alpha Synuclein antibody [MJFR1] ●■	Rb	•	WB IHC ICC/IF FCM	10 µl	ab138501
Anti-LRRK2 antibody [MJFF2 (c41-2)] ●■	Rb	• • •	WB IHC ICC/IF	10 µl	ab133474
Anti-PARK7/DJ1 antibody [EP2815Y] ●■	Rb	• • •	WB IHC ICC/IF FCM	10 µl	ab76008
Anti-Parkin antibody [EPR5024(N)] ●	Rb	• • •	WB IHC ICC/IF FCM	10 µl	ab179812
Anti-PINK1 antibody [EPR20730] ●	Rb	•	WB ICC/IF	10 µl	ab216144
Goat Anti-Rabbit IgG H&L (HRP)	Gt		WB IHC	100 µg	ab205718

## Tau Research Antibody Panel (ab226492)

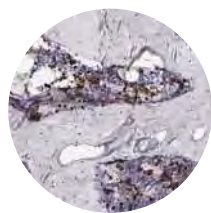
Anti-Tau (phospho S198) antibody [EPR2400] ●	Rb	•	WB IHC ICC/IF	10 µl	ab79540
Anti-Tau (phospho S199) antibody [EPR2401Y] ●	Rb	• • •	WB IHC	10 µl	ab81268
Anti-Tau (phospho S202 + T205) antibody [EPR20390] ●	Rb	•	WB	10 µl	ab210703
Anti-Tau (phospho S214) antibody [EPR1884(2)] ●	Rb	• • •	WB IHC	10 µl	ab170892
Anti-Tau (phospho S396) antibody [EPR2731] ●	Rb	• • •	WB IHC	10 µl	ab109390
Anti-Tau (phospho S404) antibody [EPR2605] ●	Rb	• • •	WB IHC ICC/IF	10 µl	ab92676
Anti-Tau (phospho S422) antibody [EPR2866] ●	Rb	•	WB	10 µl	ab79415
Anti-Tau (phospho T231) antibody [EPR2488] ●	Rb	• • •	WB IHC	10 µl	ab151559
Anti-Tau antibody [TAU-5]	Ms	• • •	WB ICC/IF FCM	10 µl	ab80579
Goat Anti-Mouse IgG H&L (HRP)	Gt	•	WB IHC	100 µg	ab205719
Goat Anti-Rabbit IgG H&L (HRP)	Gt		WB IHC	100 µg	ab205718

● RabMAB® ■ KO Validated

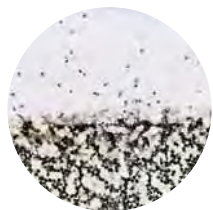
FCM = Flow Cytometry, Hu = Human, Gt = Goat, Ms = Mouse, Rb = Rabbit, Rt = Rat



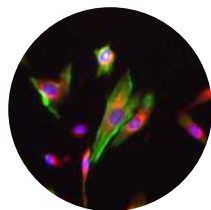
IHC - Anti-Amyloid Fibril antibody [mOC87] (ab201062)



IHC - Anti-CD11b antibody [EPR1344] (ab133357)



IHC - Anti-NeuN antibody [EPR12763] (ab177487)



ICC/IF - Anti-Tau antibody [TAU-5] (ab80579)

### Citations

Anti-alpha-Synuclein antibody [MJFR1] (ab138501)	Anti-beta Amyloid 1-42 antibody [mOC64] (ab201060)	Anti-CD11b antibody [EPR1344] (ab133357)	Anti-GFAP antibody [EPR1034Y] (ab68428)
<ul style="list-style-type: none"> <li>Front Cell Neurosci 12:4 (2018). PubMed: 29387000</li> <li>Int J Mol Med 40: 1772-1780 (2017). PubMed: 29039448</li> </ul>	<ul style="list-style-type: none"> <li>Front Pharmacol 8:219 (2017). PubMed: 28553224</li> <li>Biomed Res Int 2017:3706018 (2017). PubMed: 29138750</li> </ul>	<ul style="list-style-type: none"> <li>Mol Ther Oncolytics 8:14-26 (2018). PubMed: 29322091</li> <li>Sci Rep 7:43776 (2017). PubMed: 28256637</li> </ul>	<ul style="list-style-type: none"> <li>Neuroscience 372:192-212 (2018). PubMed: 29292072</li> <li>Oncotarget 8:18082-18094 (2017). PubMed: 28178646</li> </ul>
Anti-NeuN antibody [EPR12763] (ab177487)	Anti-Parkin antibody [EPR5024(N)] (ab179812)	Anti-Synaptophysin antibody [YE269] (ab32127)	Anti-Tau (phospho S214) antibody [EPR1884(2)] (ab170892)
<ul style="list-style-type: none"> <li>Sci Rep 8:11 (2018). PubMed: 29311646</li> <li>Front Neurosci 12:11 (2018). PubMed: 29422836</li> </ul>	<ul style="list-style-type: none"> <li>Sci Rep 7:13554 (2017). PubMed: 29051574</li> <li>Int J Mol Sci 18:N/A (2017). PubMed: 29112159</li> </ul>	<ul style="list-style-type: none"> <li>Mol Brain 11:7 (2018). PubMed: 29426354</li> <li>Mol Neurobiol 54:855-865 (2017). PubMed: 26780455</li> </ul>	<ul style="list-style-type: none"> <li>Nat Commun 9:433 (2018). PubMed: 29382817</li> <li>Sci Rep 6:34784 (2016). PubMed: 27708431</li> </ul>

## Cell Cycle Antibody Sampler Panel (ab228528)

Anti-Cdk2 antibody [E304] ●■	Rb	• • •	WB IHC ICC/IF FCM	10 µl	ab32147
Anti-Cdk6 antibody [EPR4515] ●■	Rb	•	WB IHC ICC/IF FCM	10 µl	ab124821
Anti-Cyclin B1 antibody [EPR17060] ●■	Rb	• •	WB IHC ICC/IF FCM	10 µl	ab181593
Anti-Cyclin D1 antibody [EPR2241] •	Rb	• • •	WB IHC ICC/IF	10 µl	ab134175
Anti-p21 antibody [EPR3993] ●■	Rb	• • •	WB ICC/IF	10 µl	ab109199
Anti-p27 KIP 1 antibody [Y236] ●■	Rb	• • •	WB IHC ICC/IF FCM	10 µl	ab32034
Goat Anti-Rabbit IgG H&L (HRP)	Gt		WB IHC	10 µl	ab205718

## NF-κB Signaling Pathway Antibody Sampler Panel (ab228529)

Anti-IκB alpha (phospho S36) antibody [EPR6235(2)] •	Rb	• •	WB ICC/IF FCM	10 µl	ab133462
Anti-IκB alpha antibody [E130] ●■	Rb	• • •	WB IHC ICC/IF FCM	10 µl	ab32518
Anti-NFκB p105 / p50 antibody [E381] ●■	Rb	• • •	WB IHC	10 µl	ab32360
Anti-NF-κB p65 (phospho S536) antibody [EP2294Y] •	Rb	•	WB	10 µl	ab76302
Anti-NF-κB p65 antibody [E379] ●■	Rb	• •	WB IHC ICC/IF FCM	10 µl	ab32536
Goat Anti-Rabbit IgG H&L (HRP)	Gt		WB IHC	10 µl	ab205718

## p53 Antibody Sampler Panel (ab219089)

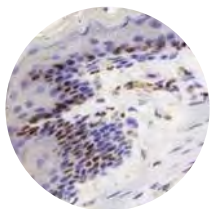
Anti-Mutant p53 antibody [Y5] •	Rb	•	WB IHC ICC/IF FCM	10 µl	ab32049
Anti-p53 (acetyl K382) antibody [EPR358(2)] •	Rb	•	WB IHC ICC/IF	10 µl	ab75754
Anti-p53 (phospho S20) antibody [EPR2156(2)] •	Rb	•	WB	10 µl	ab157454
Anti-p53 (phospho S392) antibody [EP155Y] •	Rb	• • •	WB IHC	10 µl	ab33889
Anti-p53 (phospho S46) antibody [EP42Y] •	Rb	•	WB IHC ICC/IF	10 µl	ab76242
Anti-p53 antibody [DO-1] ■	Ms	•	WB IHC ICC/IF FCM ChIP	10 µg	ab1101
Goat Anti-Mouse IgG H&L (HRP)	Gt	•	WB IHC	100 µg	ab205719
Goat Anti-Rabbit IgG H&L (HRP)	Gt		WB IHC	100 µg	ab205718

## Wnt/Beta Catenin Signaling Pathway Antibody Sampler Panel (ab228526)

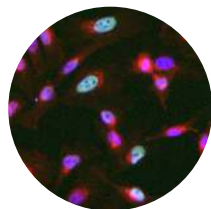
Anti-c Myc antibody [Y69] •	Rb	• • •	WB IHC ICC/IF FCM	10 µl	ab32072
Anti-c-Jun antibody [E254] •	Rb	• • •	WB IHC ICC/IF	10 µl	ab32137
Anti-Cyclin D1 antibody [EPR2241] •	Rb	• • •	WB IHC ICC/IF	10 µl	ab134175
Anti-LEF1 antibody [EPR2029Y] •	Rb	• • •	WB IHC ICC/IF FCM	10 µl	ab137872
Anti-Met (c-Met) antibody [EP1454Y] ●■	Rb	• • •	WB IHC ICC/IF FCM	10 µl	ab51067
Anti-TCF7 antibody [EPR2035] •	Rb	• •	WB ICC/IF	10 µl	ab134127
Goat Anti-Rabbit IgG H&L (HRP)	Gt		WB IHC	100 µg	ab205718

● RabMAB® ■ KO Validated

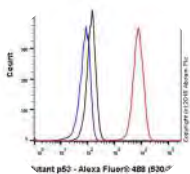
FCM = Flow Cytometry, Hu = Human, Gt = Goat, Ms = Mouse, Rb = Rabbit, Rt = Rat



IHC - Anti-Cyclin D1 antibody [EPR2241] (ab134175)



ICC/IF - Anti-c-Jun antibody [E254] (ab32137)



FCM - Anti-Mutant p53 antibody [Y5] (ab32049)



WB - Anti-p53 [DO-1] antibody (ab1101)

### Citations

Anti-Cyclin B1 antibody [EPR17060] (ab181593)	Anti-Cyclin D1 antibody [EPR2241] (ab134175)	Anti-c-Jun antibody [E254] (ab32137)	Anti-c-Myc antibody [Y69] (ab32072)
<ul style="list-style-type: none"> <li>J Cell Biol 217:179-193 (2018). PubMed: 29074707</li> <li>PLoS One 12:e0177844 (2017). PubMed: 28542354</li> </ul>	<ul style="list-style-type: none"> <li>J Transl Med 16:7 (2018). PubMed: 29343267</li> <li>Stem Cells Int 2017:6158468 (2017). PubMed: 29098009</li> </ul>	<ul style="list-style-type: none"> <li>Nat Commun 8:14272 (2017). PubMed: 28139683</li> <li>Am J Transl Res 9:1193-1202 (2017). PubMed: 28386345</li> </ul>	<ul style="list-style-type: none"> <li>Sci Rep 8:2021 (2018). PubMed: 29386660</li> <li>J Transl Med 16:7 (2018). PubMed: 29343267</li> </ul>
Anti-NF-κB p65 antibody [E379] (ab32536)	Anti-p21 antibody [EPR3993] (ab109199)	Anti-Mutant p53 antibody [Y5] (ab32049)	Anti-p53 antibody [DO-1] (ab1101)
<ul style="list-style-type: none"> <li>Nat Med 24:154-164 (2018). PubMed: 29291352</li> <li>Cancer Sci 109:132-140 (2018). PubMed: 29121426</li> </ul>	<ul style="list-style-type: none"> <li>J Dermatol Sci N/A:N/A (2018). PubMed: 29307600</li> <li>Cell Death Dis 9:105 (2018). PubMed: 29367621</li> </ul>	<ul style="list-style-type: none"> <li>Nat Commun 9:562 (2018). PubMed: 29422620</li> <li>Exp Ther Med 13:3189-3194 (2017). PubMed: 28588672</li> </ul>	<ul style="list-style-type: none"> <li>Exp Ther Med 14:753-758 (2017). PubMed: 28672995</li> <li>Nat Commun 8:313 (2017). PubMed: 28827596</li> </ul>

## Human Embryonic Stem Cell Marker Panel (ab109884)

Anti-Nanog antibody - ChIP Grade	Rb	•	WB IHC ICC/IF FCM ChIP	50 µl	ab21624
Anti-Oct4 antibody - ChIP Grade	Rb	• •	WB ICC/IF FCM ChIP	50 µg	ab19857
Anti-SOX2 antibody	Rb	• • •	WB IHC ICC/IF	50 µg	ab97959
Anti-SSEA4 antibody [MC813]	Ms	• • •	WB IHC ICC/IF FCM	50 µl	ab16287
Anti-TRA-1-60 (R) antibody [TRA-1-60]	Ms	•	WB IHC ICC/IF FCM	50 µg	ab16288

## Human Mesenchymal Stromal Cell Marker Panel (ab93758)

Anti-CD105 antibody [105C02]	Ms	•	WB IHC FCM	50 µl	ab44967
Anti-CD44 antibody [F10-44-2]	Ms	•	WB ICC/IF FCM	50 µg	ab6124
Anti-CD45 antibody	Rb	•	WB IHC ICC/IF FCM	50 µg	ab10559
Anti-CD90 / Thy1 antibody [AF-9]	Ms	•	IHC FCM	50 µg	ab23894
Anti-Integrin beta 1 antibody [EP1041Y]	Rb	•	WB IHC	10 µl	ab52971

## Mouse Embryonic Stem Cell Marker Panel (ab107156)

Anti-CD15 antibody [MC-480]	Ms	•	IHC ICC/IF FCM	50 µl	ab16285
Anti-Oct4 antibody - ChIP Grade	Rb	• •	WB ICC/IF FCM ChIP	50 µg	ab19857
Anti-Nanog antibody	Rb	• •	WB IHC ICC/IF FCM	50 µl	ab80892
Anti-SOX2 antibody	Rb	• • •	WB IHC ICC/IF	50 µg	ab97959

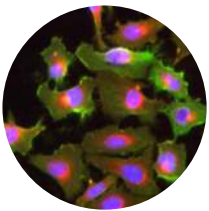
## Mouse Mesenchymal Stromal Cell Marker Panel (ab93759)

Anti-CD44 antibody [KM201]	Rt	•	WB IHC FCM	50 µg	ab25340
Anti-CD45 antibody [I3/2.3]	Rt	•	IHC FCM	50 µg	ab25386
Anti-CD90 / Thy1 antibody [IBL-6/23]	Rt	•	IHC ICC/IF FCM	50 µg	ab3105
Anti-Integrin beta 1 antibody [KML6]	Rt	•	WB IHC ICC/IF FCM	50 µg	ab95623
Anti-Sca1 / Ly6A/E antibody [E13 161-7]	Rt	•	ICC/IF	50 µg	ab51317

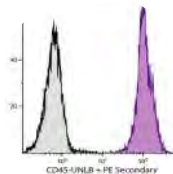
FCM = Flow Cytometry, Hu = Human, Gt = Goat, Ms = Mouse, Rb = Rabbit, Rt = Rat

### Citations

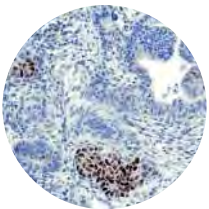
Human Mesenchymal Stromal Cell Marker Panel (ab93758)	Mouse Embryonic Stem Cell Marker Panel (ab107156)	Mouse Mesenchymal Stromal Cell Marker Panel (ab93759)	Anti-CD15 antibody [MC-480] (ab16285)
<ul style="list-style-type: none"> <li>J Cell Biol 188:595-609 (2010). PubMed: 20176926</li> <li>Reprod Sci 17:158-67 (2010). PubMed: 19805552</li> </ul>	<ul style="list-style-type: none"> <li>Sci Rep 7:41852 (2017). PubMed: 28157205</li> <li>Nature 463:621-6 (2010). PubMed: 20054295</li> </ul>	<ul style="list-style-type: none"> <li>J Cell Biol 188:595-609 (2010). PubMed: 20176926</li> <li>Eur J Oral Sci 117:34-42 (2009). PubMed: 19196316</li> </ul>	<ul style="list-style-type: none"> <li>PeerJ 6:e4177 (2018). PubMed: 29312817</li> <li>Mol Med Rep 15:3690-3698 (2017). PubMed: 28393187</li> </ul>
Anti-CD44 antibody [F10-44-2] (ab6124)	Anti-CD90 / Thy1 antibody [IBL-6/23] (ab3105)	Anti-Integrin beta 1 antibody [EP1041Y] (ab52971)	Anti-Nanog antibody (ab80892)
<ul style="list-style-type: none"> <li>Front Cell Infect Microbiol 7:154 (2017). PubMed: 28516064</li> <li>Oncol Lett 14:2334-2340 (2017). PubMed: 28789451</li> </ul>	<ul style="list-style-type: none"> <li>Mol Med Rep 15:613-626 (2017). PubMed: 28035356</li> <li>Oncotarget 8:104418-104429 (2017). PubMed: 29262650</li> </ul>	<ul style="list-style-type: none"> <li>Nat Commun 9:191 (2018). PubMed: 29335551</li> <li>Front Mol Neurosci 10:431 (2017). PubMed: 29311819</li> </ul>	<ul style="list-style-type: none"> <li>Stem Cell Res Ther 9:2 (2018). PubMed: 29304842</li> <li>Nat Commun 9:424 (2018). PubMed: 29382819</li> </ul>
Anti-Oct4 antibody (ab19857)	Anti-Sca1 / Ly6A/E antibody [E13 161-7] (ab51317)	Anti-SOX2 antibody (ab97959)	Anti-SSEA4 antibody [MC813] (ab16287)
<ul style="list-style-type: none"> <li>Sci Rep 8:1189 (2018). PubMed: 29352121</li> <li>Stem Cell Res 28:25-28 (2018). PubMed: 29414414</li> </ul>	<ul style="list-style-type: none"> <li>JCI Insight 2:N/A (2017). PubMed: 28614787</li> <li>Stem Cells Transl Med 6:394-404 (2017). PubMed: 28191756</li> </ul>	<ul style="list-style-type: none"> <li>Stem Cells Dev 27:112-122 (2018). PubMed: 29161957</li> <li>PeerJ 6:e4177 (2018). PubMed: 29312817</li> </ul>	<ul style="list-style-type: none"> <li>Stem Cell Res 28:21-24 (2018). PubMed: 29414413</li> <li>Stem Cell Reports 8:883-893 (2017). PubMed: 28344003</li> </ul>



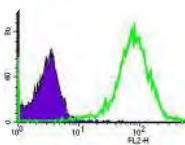
ICC/IF - Anti-CD44 antibody [F10-44-2] (ab6124)



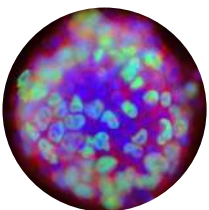
FCM - Anti-CD45 antibody [I3/2.3] (ab25386)



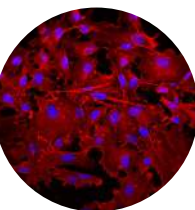
IHC - Anti-Nanog antibody (ab80892)



FCM - Anti-Oct4 antibody (ab19857)



ICC/IF - Anti-SOX2 antibody (ab97959)



ICC/IF - Anti-SSEA4 [MC813] antibody (ab16287)

Antibody Panel and Components	Reactivity				Application	Size	Cat. No.
	Host	Hu	Ms	Rt			
<b>Multicolor Human B Cell Marker Panel (ab106071)</b>							
Anti-CD5 antibody [CRIS1] (Phycoerythrin)	Ms	•			FCM	50 tests	ab1157
Anti-CD20 antibody [B9E9] (FITC)	Ms	•			FCM	50 tests	ab1169
Anti-CD19 antibody [LT19] (Allophycocyanin)	Ms	•			FCM	50 tests	ab18224
Anti-CD45 antibody [F10-89-4] (PE/Cy7 <sup>®</sup> )	Ms	•			FCM	50 tests	ab46729

## Multicolor Human T Cell Marker Panel (ab106073)

Anti-CD3 antibody [MEM-57] (FITC)	Ms	•			FCM	50 tests	ab69764
Anti-CD4 antibody [MEM-241] (Phycoerythrin)	Ms	•			FCM	50 tests	ab18282
Anti-CD8 antibody [MEM-31] (Allophycocyanin)	Ms	•			FCM	50 tests	ab26004
Anti-CD45 antibody [F10-89-4] (PE/Cy7 <sup>®</sup> )	Ms	•			FCM	50 tests	ab46729

FCM = Flow Cytometry, Hu = Human, Gt = Goat, Ms = Mouse, Rb = Rabbit, Rt = Rat

Antibody Panel and Components	Reactivity				Application	Size	Cat. No.
	Host	Hu	Ms	Rt			
<b>Acetylated Histone H3 Antibody Sampler Panel (ab218055)</b>							
Anti-Histone H3 (acetyl K14) antibody [EP964Y] •	Rb	•	•		WB IHC ICC/IF ChIP	10 µl	ab52946
Anti-Histone H3 (acetyl K18) antibody [EP959Y] •	Rb	•	•	•	WB IHC ICC/IF FCM ChIP	10 µl	ab40888
Anti-Histone H3 antibody [EPR16987] •	Rb	•	•	•	WB IHC ICC/IF FCM ChIP	10 µl	ab176842
Anti-Histone H3 (acetyl K23) antibody [EPR17712] •	Rb	•	•		WB ICC/IF ChIP	10 µl	ab177275
Anti-Histone H3 (acetyl K27) antibody [EP16602] •	Rb	•	•	•	WB IHC ICC/IF ChIP	10 µl	ab177178
Anti-Histone H3 (acetyl K4) antibody [EPR16596] •	Rb	•	•		WB ICC/IF ChIP	10 µl	ab176799
Anti-Histone H3 (acetyl K9) antibody [EPR16988] •	Rb	•	•	•	WB IHC ICC/IF ChIP	10 µl	ab177177
Goat Anti-Rabbit IgG H&L (HRP)	Gt				WB IHC	100 µg	ab205718

## Acetylated Histone H4 Antibody Sampler Pack (ab218056)

Anti-Histone H4 antibody [EPR16599] •	Rb	•	•	•	WB IHC ICC/IF ChIP	10 µl	ab177840
Anti-Histone H4 (acetyl K5) antibody [EP1000Y] •	Rb	•	•	•	WB IHC ICC/IF ChIP	10 µl	ab51997
Anti-Histone H4 (acetyl K8) antibody [EP1002Y] •	Rb	•	•	•	WB IHC ICC/IF FCM ChIP	10 µl	ab45166
Anti-Histone H4 (acetyl K12) antibody [EPR17906] •	Rb	•	•	•	WB IHC ICC/IF FCM	10 µl	ab177793
Anti-Histone H4 (acetyl K16) antibody [EPR1004] •	Rb	•	•	•	WB IHC ICC/IF FCM	10 µl	ab109463
Anti-Histone H4 (acetyl K20) antibody [EPR16998(2)] •	Rb	•	•		WB ICC/IF	10 µl	ab177191
Goat Anti-Rabbit IgG H&L (HRP)	Gt				WB IHC	100 µg	ab205718

## DNA Damage Kinases Panel (ab103970)

Anti-ATM (phospho S1981) antibody [10H11.E12]	Ms	•	•		WB IHC ICC/IF FCM	25 µg	ab36810
Anti-ATM antibody	Rb	•	•		WB ICC/IF	25 µg	ab82512
Anti-ATR (phospho S428) antibody [EPR2184] •	Rb	•			WB IHC	10 µl	ab178407
Anti-ATR antibody - ChIP Grade	Rb	•	•		WB ICC/IF ChIP	25 µl	ab2905
Anti-DNA PKcs (phospho S2056) antibody - ChIP Grade	Rb	•			WB IHC ICC/IF FCM ChIP	25 µg	ab18192
Anti-DNA PKcs antibody	Rb	•			WB ICC/IF	25 µl	ab70250

## Histone H3 (K4 methylation) Panel (ab103938)

Anti-Histone H3 (di methyl K4) antibody [Y47] - ChIP Grade •	Rb	•	•	•	WB IHC ICC/IF FCM ChIP	25 µl	ab32356
Anti-Histone H3 (mono methyl K4) antibody - ChIP Grade	Rb	•	•		WB IHC ICC/IF FCM ChIP	25 µg	ab8895
Anti-Histone H3 (tri methyl K4) antibody [mAbcam12209] - ChIP Grade	Ms	•	•	•	WB ICC/IF FCM ChIP	25 µg	ab12209
Anti-Histone H3 antibody [EPR16987] •	Rb	•	•	•	WB IHC ICC/IF FCM ChIP	10 µl	ab176842

FCM = Flow Cytometry, Hu = Human, Gt = Goat, Ms = Mouse, Rb = Rabbit, Rt = Rat

## Histone H3 (K9 methylation) Panel (ab113754)

Anti-Histone H3 (di methyl K9) antibody [mAbcam 1220] - ChIP Grade	Ms	• • •	WB IHC ICC/IF FCM ChIP	25 µg	ab1220
Anti-Histone H3 (mono methyl K9) antibody - ChIP Grade	Rb	• •	WB IHC ICC/IF FCM ChIP	25 µg	ab9045
Anti-Histone H3 (tri methyl K9) antibody - ChIP Grade	Rb	• • •	WB IHC ICC/IF FCM ChIP	25 µg	ab8898
Anti-Histone H3 antibody [EPR16987] •	Rb	• • •	WB IHC ICC/IF FCM ChIP	10 µl	ab176842

## Homologous Recombination Panel (ab115486)

Anti-gamma H2A.X (phospho S139) antibody - ChIP Grade	Rb	• • •	WB IHC ICC/IF ChIP	25 µg	ab2893
Anti-Histone H2A.X antibody	Rb	•	WB IHC	25 µg	ab10475
Anti-RAD54 antibody	Rb	•	WB	25 µg	ab10705
Anti-p95 NBS1 antibody	Rb	• • •	WB ICC/IF	25 µg	ab23996
Anti-CtIP antibody	Rb	• •	WB ICC/IF	25 µg	ab38016
Anti-Rad51 antibody	Rb	• •	WB ICC/IF	25 µg	ab84304

## Homologous Recombination Panel (ab115487)

Anti-gamma H2A.X (phospho S139) antibody - ChIP Grade	Rb	• • •	WB IHC ICC/IF ChIP	25 µg	ab2893
Anti-Histone H2A.X antibody	Rb	•	WB IHC	25 µg	ab10475
Anti-RAD54 antibody	Rb	•	WB	25 µg	ab10705
Anti-Rad51 antibody	Rb	• •	WB ICC/IF	25 µg	ab84304

## Non-Homologous End Joining Panel (ab213658)

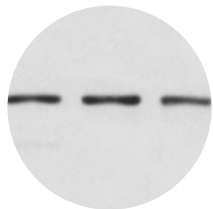
Anti-gamma H2A.X (phospho S139) antibody - ChIP Grade	Rb	• • •	WB IHC ICC/IF ChIP	25 µg	ab2893
Anti-Histone H2A.X antibody	Rb	•	WB IHC	25 µg	ab10475
Anti-Ku70 antibody	Rb	•	WB IHC ICC/IF	25 µg	ab83501
Anti-Ku80 antibody	Rb	•	WB	25 µg	ab87860
Anti-DNA Ligase IV antibody [EPR16531] • ■	Rb	•	WB IHC ICC/IF	25 µl	ab193353

## RNA Polymerase II CTD Panel (ab103968)

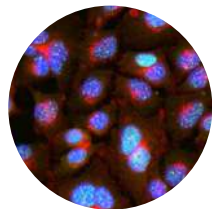
Anti-RNA Polymerase II CTD repeat YSPTSPS (phospho S2) antibody - ChIP Grade	Rb	• • •	WB IHC ICC/IF ChIP	25 µg	ab5095
Anti-RNA Polymerase II CTD repeat YSPTSPS (phospho S5) antibody - ChIP Grade	Rb	• • •	WB IHC ICC/IF ChIP	25 µg	ab5131
Anti-RNA Polymerase II CTD repeat YSPTSPS (phospho S5) antibody [4H8] - ChIP Grade	Ms	• • •	WB ICC/IF FCM ChIP	25 µg	ab5408
Anti-RNA Polymerase II CTD repeat YSPTSPS antibody [8WG16] - ChIP Grade	Ms	• •	WB ICC/IF FCM ChIP	25 µg	ab817

● RabMAB®    ■ KO Validated

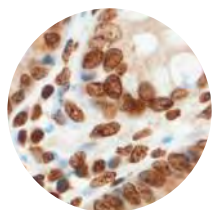
FCM = Flow Cytometry, Hu = Human, Gt = Goat, Ms = Mouse, Rb = Rabbit, Rt = Rat



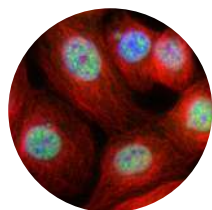
WB - Anti-DNA Ligase IV antibody [EPR16531] (ab193353)



ICC/IF - Anti-gamma H2A.X (phospho S139) antibody (ab2893)



IHC - Anti-Histone H3 (tri methyl K9) antibody (ab8898)



ICC/IF - Anti-RNA polymerase II CTD repeat YSPTSPS (phospho S2) antibody (ab5095)

### Citations

DNA Damage Kinases Panel (ab103970)	Histone H3 (K4 methylation) Panel (ab103938)	Histone H3 (K9 methylation) Panel (ab113754)	Homologous Recombination Panel (ab115486)
<ul style="list-style-type: none"> <li>Cell Cycle 9:1421-33 (2010). PubMed: 20305393</li> <li>DNA Repair (Amst) 9:76-82 (2010). PubMed: 19959400</li> </ul>	<ul style="list-style-type: none"> <li>Genes Dev 24:590-601 (2010). PubMed: 20231316</li> <li>Nucleic Acids Res 38:1441-9 (2010). PubMed: 20015969</li> </ul>	<ul style="list-style-type: none"> <li>Nat Commun 5:5264 (2014). PubMed: 25345385</li> </ul>	<ul style="list-style-type: none"> <li>PLoS One 5:e12055 (2010). PubMed: 20700465</li> <li>Nat Cell Biol 11:1315-24 (2009). PubMed: 19838172</li> </ul>
Homologous Recombination Panel (ab115487)	RNA polymerase II CTD Panel (ab103968)	Anti-Histone H3 (acetyl K14) antibody [EP964Y] (ab52946)	Anti-gamma H2A.X (phospho S139) antibody (ab2893)
<ul style="list-style-type: none"> <li>PLoS Genet 6: (2010). PubMed: 20711355</li> <li>PLoS One 5:e12055 (2010). PubMed: 20700465</li> </ul>	<ul style="list-style-type: none"> <li>Genome Res 22:259-70 (2012). PubMed: 22086061</li> <li>Genes Dev 24:171-82 (2010). PubMed: 20080953</li> </ul>	<ul style="list-style-type: none"> <li>PLoS Negl Trop Dis 11:e0005539 (2017). PubMed: 28406899</li> <li>Sci Rep 7:5254 (2017). PubMed: 28701802</li> </ul>	<ul style="list-style-type: none"> <li>Cell Death Dis 9:178 (2018). PubMed: 29415988</li> <li>Dev Cell 41:623-637.e9 (2017). PubMed: 28633017</li> </ul>

Antibody Panel and Components	Reactivity				Application	Size	Cat. No.
	Host	Hu	Ms	Rt			

## Mouse Loading Control Antibody Panel (ab199713)

Anti-alpha Tubulin antibody [DM1A] - Loading Control	Ms	•	•	•	WB IHC ICC/IF FCM	40 µg	ab7291
Anti-alpha 1 Sodium Potassium ATPase antibody [464.6] - Plasma Membrane Marker	Ms	•	•	•	WB IHC ICC/IF FCM	40 µg	ab7671
Anti-GAPDH antibody [mAbcam 9484] - Loading Control	Ms	•	•	•	WB IHC FCM	40 µg	ab9484
Anti-Histone H3 antibody [mAbcam 24834] - Nuclear Loading Control and ChIP Grade	Ms	•	•	•	WB ChIP	40 µg	ab24834
Anti-COX IV antibody [mAbcam33985] - Mitochondrial Marker	Ms	•	•	•	WB IHC ICC/IF FCM	40 µg	ab33985
Rabbit Anti-Mouse IgG H&L (HRP)	Rb				WB IHC ICC/IF	200 µg	ab6728

## Mouse Loading Control Antibody Panel (Alexa Fluor® 680) (ab199716)

Anti-beta Actin antibody [mAbcam 8226] (Alexa Fluor® 680) - Loading Control	Ms	•	•		WB	40 µg	ab184092
Anti-alpha Tubulin antibody [DM1A] (Alexa Fluor® 680) - Loading Control	Ms	•	•		WB	40 µg	ab184093
Anti-GAPDH antibody [mAbcam 9484] (Alexa Fluor® 680) - Loading Control	Ms	•			WB	40 µg	ab184095

## Mouse Loading Control Antibody Panel (Alexa Fluor® 790) (ab200701)

Anti-alpha Tubulin antibody [DM1A] (Alexa Fluor® 790) - Loading Control	Ms	•	•		WB	40 µg	ab184577
Anti-beta Actin antibody [mAbcam 8226] (Alexa Fluor® 790) - Loading Control	Ms	•	•		WB	40 µg	ab184576
Anti-GAPDH antibody [mAbcam 9484] (Alexa Fluor® 790) - Loading Control	Ms	•	•		WB	40 µg	ab184578

## Mouse Loading Control Antibody Panel (HRP) (ab199715)

Anti-GAPDH antibody [mAbcam 9484] (HRP) - Loading Control	Ms	•	•	•	WB	40 µl	ab9482
Anti-alpha Tubulin antibody [DM1A] (HRP) - Loading Control	Ms	•	•	•	WB IHC	40 µl	ab40742
Anti-COX IV antibody [mAbcam33985] (HRP) - Mitochondrial Marker	Ms	•	•		WB IHC	40 µl	ab62164
Anti-alpha 1 Sodium Potassium ATPase antibody [464.6] (HRP) - Plasma Membrane Marker	Ms	•	•	•	WB IHC	40 µl	ab196696

## Rabbit Loading Control Antibody Panel (ab199712)

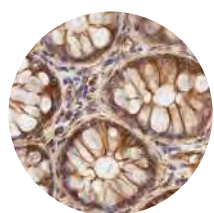
Anti-alpha Tubulin antibody [EPR13478(B)] - Loading Control •	Rb	•	•	•	WB IHC ICC/IF FCM	10 µl	ab176560
Anti-COX IV antibody [EPR9442(ABC)] - Mitochondrial Loading Control •	Rb	•	•	•	WB IHC ICC/IF FCM	10 µl	ab202554
Anti-GAPDH antibody [EPR16891] •	Rb	•	•	•	WB IHC ICC/IF FCM	10 µl	ab181602
Anti-Histone H3 antibody [EPR16987] - Nuclear Loading Control and ChIP Grade •	Rb	•	•	•	WB IHC ICC/IF FCM ChIP	10 µl	ab176842
Anti-Sodium Potassium ATPase antibody [EP1845Y] - Plasma Membrane Loading Control •	Rb	•	•	•	WB IHC ICC/IF FCM	10 µl	ab76020
Goat Anti-Rabbit IgG H&L (HRP)	Gt				WB IHC	100 µg	ab205718

## Rabbit Loading Control Antibody Panel (HRP) (ab199714)

Anti-GAPDH antibody [EPR16891] (HRP) •	Rb	•	•	•	WB IHC	40 µl	ab201822
Anti-Histone H3 antibody [EPR16987] (HRP) •	Rb	•	•		WB IHC	40 µl	ab209023
Anti-COX IV antibody [EPR9442(ABC)] (HRP) •	Rb	•	•	•	WB IHC	40 µl	ab209958
Anti-Sodium Potassium ATPase antibody [EP1845Y] (HRP) - Plasma Membrane Loading Control •	Rb	•	•	•	WB IHC	40 µl	ab185065
Anti-alpha Tubulin antibody [EPR13478(B)] (HRP) - Loading Control •	Rb	•	•	•	WB IHC	40 µl	ab185067

● RabMab® ■ KO Validated

FCM = Flow Cytometry, Hu = Human, Gt = Goat, Ms = Mouse, Rb = Rabbit, Rt = Rat



IHC - Anti-alpha Tubulin antibody [DM1A] (ab7291)



WB - Anti-GAPDH antibody [EPR16891] (ab181602)

### Citations

Mouse Loading Control Antibody Panel (ab199713)	Mouse Loading Control Antibody Panel (HRP) (ab199715)	Rabbit Loading Control Antibody Panel (ab199712)	Rabbit Loading Control Antibody Panel (HRP) (ab199714)
<ul style="list-style-type: none"> <li>Cell Death Differ N/A:N/A (2014). PubMed: 24488099</li> <li>PLoS One 9:e91248 (2014). PubMed: 24642683</li> </ul>	<ul style="list-style-type: none"> <li>PLoS One 9:e86988 (2014). PubMed: 24466306</li> <li>Int J Mol Sci 15:1538-53 (2014). PubMed: 24451137</li> </ul>	<ul style="list-style-type: none"> <li>Hum Mol Genet 23:2005-22 (2014). PubMed: 24271013</li> <li>Mol Cancer 13:22 (2014). PubMed: 24495796</li> </ul>	<ul style="list-style-type: none"> <li>Exp Cell Res 320:175-87 (2014). PubMed: 24246223</li> <li>J Biol Chem 289:10155-67 (2014). PubMed: 24563482</li> </ul>