

## cAMP ELISA Kit

Catalog # ADI-900-067

96 Well Enzyme-Linked Immunosorbent Assay Kit

For use with saliva, serum, and culture supernatants



Reagents require separate storage conditions.



Check our website for additional protocols, technical notes and FAQs.

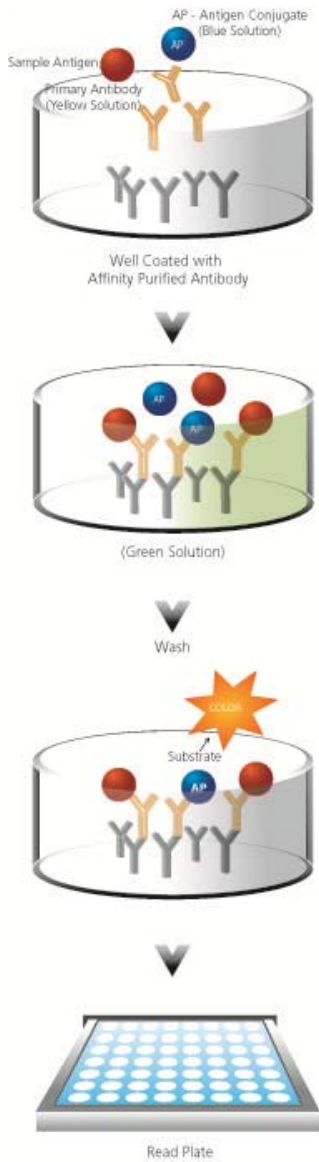


For proper performance, use the insert provided with each individual kit received.

### Table of Contents

<u>2</u>	<u>Introduction</u>
<u>3</u>	<u>Principle</u>
<u>4</u>	<u>Materials Supplied</u>
<u>5</u>	<u>Storage</u>
<u>5</u>	<u>Materials Needed but Not Supplied</u>
<u>6</u>	<u>Reagent Preparation</u>
<u>8</u>	<u>Sample Handling</u>
<u>8</u>	<u>Sample Recoveries</u>
<u>9</u>	<u>Assay Procedure</u>
<u>10</u>	<u>Calculation of Results</u>
<u>10</u>	<u>Typical Results</u>
<u>12</u>	<u>Performance Characteristics</u>
<u>14</u>	<u>References</u>
<u>16</u>	<u>Limited Warranty</u>

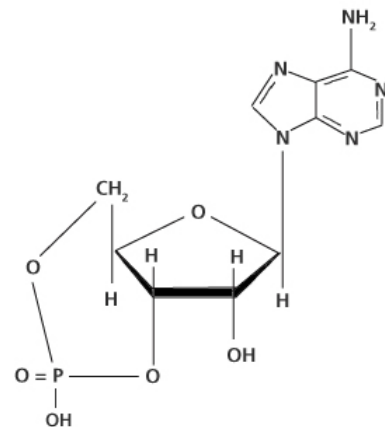
## Introduction



The cyclic AMP Enzyme-Linked Immunosorbent Assay (ELISA) kit is a competitive immunoassay for the quantitative determination of extracellular cyclic AMP in saliva, serum, and culture supernatants. The optional acetylated assay format provides an approximate 10-fold increase in sensitivity and is ideal for samples with extremely low levels of cAMP. If expected levels of cAMP are unknown, the investigator may evaluate a few samples in the non-acetylated format in order to determine if higher sensitivity is required.

Adenosine 3', 5'-cyclic monophosphate (cyclic AMP; cAMP) is one of the most important "second messengers" involved as a modulator of physiological processes<sup>5</sup>. cAMP is also involved in regulating neuronal, glandular, cardiovascular, immune and other functions<sup>6-9</sup>. A number of hormones are known to activate cAMP through the action of the enzyme adenylate cyclase which converts ATP to cAMP. These hormones include a variety of anterior pituitary peptide hormones such as corticotropin (ACTH), glucagon, calcitonin, thyroid stimulating hormone (TSH), and luteinizing hormone (LH). Because cAMP has been shown to be involved in the cardiovascular and nervous systems, immune mechanisms, cell growth and differentiation, and general metabolism<sup>10-12</sup>, there remains considerable interest in the measurement of intracellular cAMP in tissues and cell cultures. The investigation of cAMP may help to provide a clearer understanding of the physiology and pathology of many disease states.

cyclic AMP



## Principle

1. Standards and samples are added to wells coated with a GxR IgG antibody. A blue solution of cAMP conjugated to alkaline phosphatase is then added, followed by a yellow solution of rabbit polyclonal antibody to cAMP.
2. During a simultaneous incubation at room temperature the antibody binds, in a competitive manner, the cAMP in the sample or conjugate. The plate is washed, leaving only bound cAMP.
3. pNpp substrate solution is added. The substrate generates a yellow color when catalyzed by the alkaline phosphatase on the cAMP conjugate.
4. Stop solution is added. The yellow color is read at 405nm. The amount of signal is indirectly proportional to the amount of cAMP in the sample.



Do not mix components from different kit lots or use reagents beyond the expiration date of the kit.



Triethylamine and acetic anhydride are lachrymators. Caution- corrosive, flammable, and harmful vapor.



Avoid contamination by endogenous alkaline phosphatase. Do not expose reagents or supplies to bare skin.



Activity of conjugate is affected by concentrations of chelators > 10mM (such as EDTA and EGTA).



Stop solution is caustic. Keep tightly capped.

## Materials Supplied

1. **Assay Buffer 2**  
27 mL, Product No. 80-0055  
Sodium acetate buffer containing proteins and sodium azide
2. **cyclic AMP Standard**  
0.5 mL, Product No. 80-0056  
A solution of 2,000 pmol/mL cAMP
3. **Acetylation Kit**  
2 vials, Product No. 950-001
  - a. **Triethylamine**  
2 mL, Product No. 80-0063
  - b. **Acetic Anhydride**  
1 mL, Product No. 80-0064
4. **Goat anti-Rabbit IgG Microtiter Plate**  
One plate of 96 wells, Product No. 80-0060  
A clear plate of break-apart strips coated with a goat anti-rabbit polyclonal antibody
5. **cAMP ELISA Antibody**  
5 mL, Product No. 80-0604  
A yellow solution of rabbit polyclonal antibody to cAMP
6. **cAMP ELISA Conjugate**  
5 mL, Product No. 80-0053  
A blue solution of cAMP conjugated to alkaline phosphatase
7. **Wash Buffer Concentrate**  
27 mL, Product No. 80-1286  
Tris buffered saline containing detergents
8. **pNpp Substrate**  
20 mL, Product No. 80-0075  
A solution of p-nitrophenyl phosphate
9. **Stop Solution**  
5 mL, Product No. 80-0247  
A solution of trisodium phosphate in water
10. **cAMP Assay Layout Sheet**  
1 each, Product No. 30-0106
11. **Plate Sealer**  
1 each, Product No. 30-0012



All reagents, except standard and conjugate, should be stored at 4°C. Store standard and conjugate at -20°C

## Storage

All components of this kit, **except the Conjugate and Standard**, are stable at 4°C until the kit's expiration date. The Conjugate and Standard **should** be stored at -20°C upon receipt.

## Materials Needed but Not Supplied

1. Deionized or distilled water
2. Precision pipets for volumes between 5 µL and 1,000 µL
3. Repeater pipet for dispensing 50 µL and 200 µL
4. Disposable beakers for diluting buffer concentrates
5. Graduated cylinders
6. Microplate shaker
7. Lint-free paper toweling for blotting
8. Microplate reader capable of reading at 405 nm



Glass or polypropylene tubes may be used for standard preparation. Avoid polystyrene.

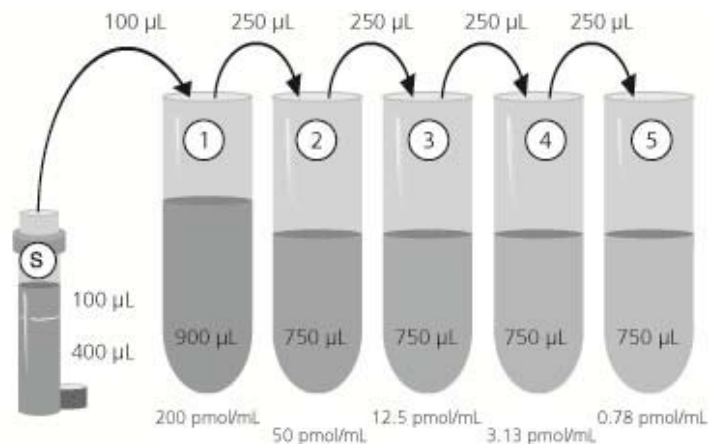
## Reagent Preparation

### 1. Wash Buffer

Prepare the wash buffer by diluting 5 mL of the supplied Wash Buffer Concentrate with 95 mL of deionized water. This can be stored at room temperature until the kit expiration, or for 3 months, whichever is earlier.

### 2. cAMP Standard, non-acetylated format

Two diluent options are available for the preparation of the standard curve, NSB, and Bo wells. Use Assay Buffer 2 for the standard diluent when the sample is serum or saliva. For culture supernatants, use the same non-conditioned media for the standard diluent.



Allow the 2,000 pmol/mL standard stock to warm to room temperature. Label five 12mm x 75mm tubes #1 through #5. Pipet 900 µL of the appropriate sample diluent into tube #1. Pipet 750 µL of the appropriate sample diluent into tubes #2 through #5. Add 100 µL of the 2,000 pmol/mL standard stock into tube #1 and vortex thoroughly. Add 250 µL of tube #1 to tube #2 and vortex thoroughly. Add 250 µL of tube #2 to tube #3 and vortex thoroughly. Continue this for tubes #4 through #5.

**Diluted standards should be used within 60 minutes of preparation.** The concentrations of cAMP in the tubes are labeled above.

### 3. Acetylation Reagent (optional)

Prepare the Acetylating Reagent by adding 0.5 mL of Acetic Anhydride to 1 mL of Triethylamine. Note that this volume is sufficient to add to 30 mL of diluted standards and samples. Use the prepared reagent within 60 minutes of preparation. Discard any unused portion of the Acetylating Reagent.



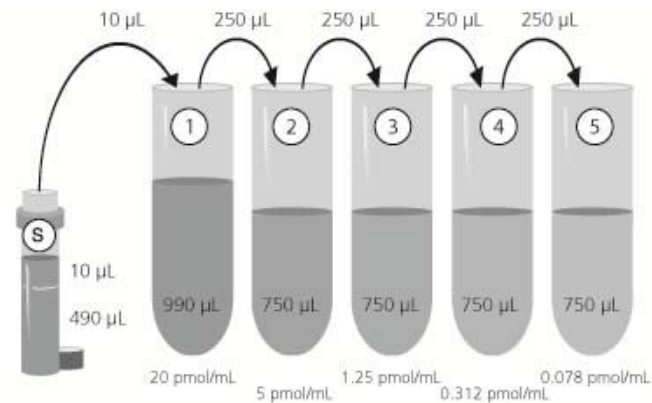
Triethylamine and acetic anhydride are lachrymators. Caution - corrosive, flammable, and harmful vapor.



Glass or polypropylene tubes may be used for standard preparation. Avoid polystyrene.

#### 4. **cAMP Standard, acetylated format (optional)**

Two diluent options are available for the preparation of the standard curve, NSB, and Bo wells. Use Assay Buffer 2 for the standard diluent when the sample is serum or saliva. For culture supernatants, use the same non-conditioned media for the standard diluent.



Allow the 2,000 pmol/mL standard stock to warm to room temperature. Label five 12mm x 75mm tubes #1 through #5. Pipet 990 µL of the appropriate sample diluent into tube #1. Pipet 750 µL of the appropriate sample diluent into tubes #2 through #5. Add 10 µL of the 2,000 pmol/mL standard stock into tube #1 and vortex thoroughly. Add 250 µL of tube #1 to tube #2 and vortex thoroughly. Add 250 µL of tube #2 to tube #3 and vortex thoroughly. Continue this for tubes #4 through #5.

Acetylate all **standards and samples** by adding 10 µL of the Acetylating Reagent for each 200 µL of the standard or sample. Add the Acetylating Reagent directly to the diluted standard or sample and vortex immediately after the addition of the Acetylating Reagent.

Label one 12mm x 75mm tube as the Bo/NSB tube. Pipet 1 mL of the appropriate standard diluent into this tube. Add 50 µL of the Acetylating Reagent to the Bo/NSB tube and use in Steps 2 and 3 of the Assay Procedure.

**The acetylated standards should be used within 30 minutes of preparation.** The concentrations of cAMP in the tubes are labeled above.



If buffers other than those provided are used in the assay, the end-user must determine the appropriate dilution and assay validation.



Samples must be stored frozen at or below -20° to avoid loss of bioactive analyte. Repeated freeze/thaw cycles should be avoided.

## Sample Handling

Samples containing rabbit IgG will interfere with the assay. EDTA plasma may precipitate during acetylation.

Biological fluids, such as serum and saliva, should be diluted in Assay Buffer 2 and run directly in the assay. A minimum 1:10 dilution is required for serum and a 1:4 dilution for saliva (see Sample Recoveries section). These are the minimum dilutions required to remove matrix interference of these samples.

Culture supernatants may be run directly in the assay provided the same non-conditioned media is used as the standard diluent.

Please note that some samples may contain high levels of cAMP and additional dilution may be required. Samples with low levels of cAMP may be assayed in the acetylated format or the samples may be concentrated.

## Sample Recoveries

cAMP standard was spiked into the following matrices diluted with Assay Buffer 2 and measured in the kit. The results were as follows:

Sample	Non-Acetylated Format		Acetylated Format	
	% Recovery	Recommended Dilution	% Recovery	Recommended Dilution
Tissue Culture Media	96.2%	None	101.2%	None
Human Serum	101.5%	1:10	117.8%	1:64
Human Saliva	103.2%	1:4	94.9%	1:4





Bring all reagents to room temperature for at least 30 minutes prior to opening.



Pre-rinse each pipet tip with reagent. Use fresh pipet tips for each sample, standard, and reagent.



All standards and samples should be run in duplicate.



Pipet the reagents to the sides of the wells to avoid possible contamination.



Prior to the addition of substrate, ensure there is no residual wash buffer in the wells. Remaining wash buffer may cause variation in assay results.

## Assay Procedure

Refer to the Assay Layout Sheet to determine the number of wells to be used. Remove the wells not needed for the assay and return them, with the desiccant, to the mylar bag and seal. Store unused wells at 4°C.

Note: If the acetylated format of the assay is to be run, all standards, samples, and the diluent for the NSB and Bo wells must be acetylated as per the instructions in the Reagent Preparation section. Acetylated standards and samples must be used within 30 minutes.

1. Pipet 100  $\mu\text{L}$  of the appropriate standard diluent (Assay Buffer 2 or non-conditioned culture media) into the NSB (non-specific binding) and Bo (0 pmol/mL standard) wells.
2. Add 50  $\mu\text{L}$  of Assay Buffer 2 to the NSB wells.
3. Pipet 100  $\mu\text{L}$  of Standards #1 through #5 to the bottom of the appropriate wells.
4. Pipet 100  $\mu\text{L}$  of the samples to the bottom of the appropriate wells.
5. Pipet 50  $\mu\text{L}$  of the blue conjugate into each well except the TA and Blank wells.
6. Pipet 50  $\mu\text{L}$  of the yellow antibody into each well except the Blank, TA, and NSB wells.  
**Note:** Every well used should be green in color except the NSB wells which should be blue. The Blank and TA wells are empty at this point and have no color.
7. Seal the plate. Incubate for 2 hours on a plate shaker (~500 rpm) at room temperature.
8. Empty the contents of the wells and wash by adding 400  $\mu\text{L}$  of wash buffer to every well. Repeat 2 more times for a total of 3 washes. After the final wash, empty or aspirate the wells and firmly tap the plate on a lint free paper towel to remove any remaining wash buffer.
9. Pipet 5  $\mu\text{L}$  of the blue conjugate to the TA wells.
10. Add 200  $\mu\text{L}$  of the substrate solution into each well.
11. Incubate for 1 hour at room temperature without shaking.
12. Pipet 50  $\mu\text{L}$  stop solution into each well.
13. After blanking the plate reader against the substrate blank, read optical density at 405 nm. If plate reader is not capable of adjusting for the blank, manually subtract the mean OD of the substrate blank from all readings.



Make sure to multiply sample concentrations by the dilution factor used during sample preparation.

## Calculation of Results

Several options are available for the calculation of the concentration of cAMP in the samples. We recommend that the data be handled by an immunoassay software package utilizing a 4 parameter logistic (4PL) curve fitting program. Assay Blaster! assay analysis software (Cat. #ADI-28-0002) is an easy-to-use and cost effective program that provides the options of point-to-point, 4PL and 5PL curve fitting options.

Samples with concentrations outside of the standard curve range will need to be re-analyzed using a different dilution.

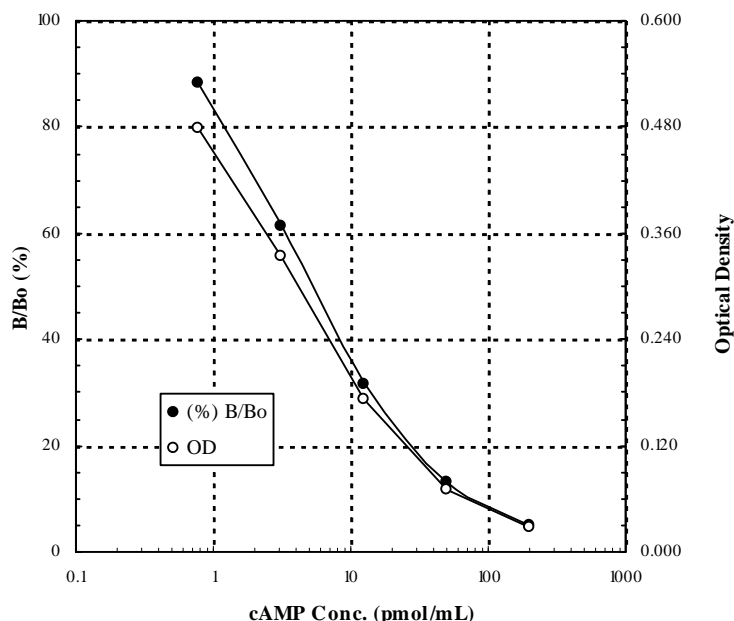
To normalize for protein content, divide the resulting picomole per mL determinations (pmol/mL) by the total protein concentration (mg/mL) in each sample. This is expressed as pmol cAMP per mg of total protein.

## Typical Results

The results shown below are for illustration only and should not be used to calculate results from another assay.

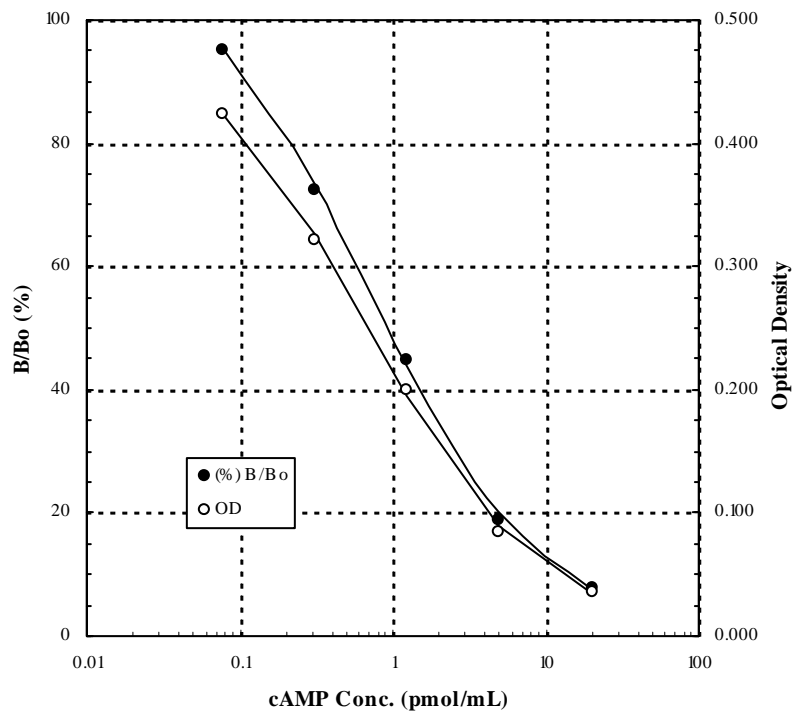
Non-acetylated assay format

Sample	Average Net OD	Percent Bound	cAMP (pmol/mL)
Blank (mean)	(0.086)	---	---
TA	0.454	---	---
NSB	0.001	0.18%	---
Bo	0.543	100%	0
S1	0.028	5.1%	200
S2	0.071	13.1%	50
S3	0.173	31.8%	12.5
S4	0.334	61.5%	3.125
S5	0.479	88.2%	0.781
Unknown 1	0.135	24.8%	18.93
Unknown 2	0.357	65.8%	2.57



**Acetylated assay format**

Sample	Average Net OD	Percent Bound	cAMP (pmol/mL)
Blank (mean)	(0.093)	---	---
TA	0.463	---	---
NSB	-0.003	-0.87%	---
B <sub>0</sub>	0.445	100%	0
S1	0.036	8.0%	20
S2	0.084	18.9%	5
S3	0.199	44.7%	1.25
S4	0.323	72.5%	0.3125
S5	0.424	95.3%	0.0781
Unknown 1	0.059	13.3%	9.20
Unknown 2	0.143	32.0%	2.27





For detailed cross-reactivity protocol see our website

## Performance Characteristics

### Specificity

The cross reactivities for a number of related compounds were determined by diluting the cross reactants in the kit assay buffer at a concentration of ten times the high standard. These samples were then measured in the assay.

Compound	Cross Reactivity
cAMP	100%
AMP	<0.33%
ATP	<0.12%
cGMP	<0.001%
GMP	<0.001%
GTP	<0.001%
cUMP	<0.001%
CTP	<0.001%

### Sensitivity

The sensitivity of the assay, defined as the concentration of cAMP measured at 2 standard deviations from the mean of 16 zeros along the standard curve, was determined to be 0.30 pmol/mL in the non-acetylated assay format and 0.039 pmol/mL in the acetylated assay format.

### Linearity

A buffer sample containing cAMP was serially diluted 1:2 in the kit assay buffer and measured in the assay. The results are shown in the table below.

#### Non-acetylated

Dilution	Expected (pmol/mL)	Observed (pmol/mL)	Recovery (%)
Neat	---	49.2	---
1:2	24.6	23.1	94%
1:4	12.3	13.7	112%
1:8	6.15	6.9	112%
1:16	3.07	3.4	111%

#### Acetylated

Dilution	Expected (pmol/mL)	Observed (pmol/mL)	Recovery (%)
Neat	---	5.42	---
1:2	2.71	2.86	106%
1:4	1.36	1.23	91%
1:8	0.68	0.51	75%
1:16	0.34	0.28	83%

## Precision

Intra-assay precision was determined by assaying 20 replicates of three buffer controls containing cAMP in a single assay.

Non-Acetylated Format		Acetylated Format	
pmol/mL	%CV	pmol/mL	%CV
1.18	10.5	0.40	7.4
5.96	2.5	0.90	6.8
18.6	2.9	5.58	7.7

Inter-assay precision was determined by measuring buffer controls of varying cAMP concentrations in multiple assays over several days.

Non-Acetylated Format		Acetylated Format	
pmol/mL	%CV	pmol/mL	%CV
1.13	13.7	0.46	11.2
4.95	11.2	0.98	11.2
19.18	8.4	4.75	7.9

## References

1. E.W. Sutherland, G.A. Robison, and R.W. Butcher, *Circulation*, (1968) 37: 279.
2. T.W. Rall, et al., *J. Biol. Chem.*, (1957) 224: 463.
3. T.W. Cook, et al., *J. Am. Chem. Soc.*, (1957), 79: 3607.
4. E.W. Sutherland, and T.W. Rall, *J. Am. Chem. Soc.*, (1957) 79: 3608.
5. D. Lipkin, et al., *J. Am. Chem. Soc.*, (1959) 81: 6198.
6. D. Chabardes, et al., *J. Clin. Invest.*, (1980) 65: 439.
7. V. Grill, and E. Cerasi, *J. Biol. Chem.*, (1974) 249: 41961.
8. R.C. Haynes, *J. Biol. Chem.*, (1958), 233: 1220.
9. A. Szentivanyi, *J. Allergy*, (1968) 42: 203.
10. P. Hamet, et al, *Adv. Cycl. Nucl. Res.*, (1983) 15: 11.
11. M. Plaut, et al, *Adv. Cycl. Nucl. Res.*, (1983) 12: 161.
12. J.H. Exton, *Adv. Cycl. Nucl. Res.*, (1983) 12: 319.

## Notes



#### **USE FOR RESEARCH PURPOSES ONLY**

Unless otherwise specified expressly on the packaging, all products sold hereunder are intended for and may be used for research purposes only and may not be used for food, drug, cosmetic or household use or for the diagnosis or treatment of human beings. Purchase does not include any right or license to use, develop or otherwise exploit these products commercially. Any commercial use, development or exploitation of these products or development using these products without the express written authorization of Enzo Life Sciences, Inc. is strictly prohibited. Buyer assumes all risk and liability for the use and/or results obtained by the use of the products covered by this invoice whether used singularly or in combination with other products.

#### **LIMITED WARRANTY; DISCLAIMER OF WARRANTIES**

These products are offered under a limited warranty. The products are guaranteed to meet all appropriate specifications described in the package insert at the time of shipment. Enzo Life Sciences' sole obligation is to replace the product to the extent of the purchasing price. All claims must be made to Enzo Life Sciences, Inc., within five (5) days of receipt of order. THIS WARRANTY IS EXPRESSLY IN LIEU OF ANY OTHER WARRANTIES OR LIABILITIES, EXPRESS OR IMPLIED, INCLUDING WARRANTIES OF MERCHANTABILITY, FITNESS FOR A PARTICULAR PURPOSE, AND NON-INFRINGEMENT OF THE PATENT OR OTHER INTELLECTUAL PROPERTY RIGHTS OF OTHERS, AND ALL SUCH WARRANTIES (AND ANY OTHER WARRANTIES IMPLIED BY LAW) ARE EXPRESSLY DISCLAIMED.

#### **TRADEMARKS AND PATENTS**

Several Enzo Life Sciences products and product applications are covered by US and foreign patents and patents pending.

**[www.enzolifesciences.com](http://www.enzolifesciences.com)**  
***Enabling Discovery in Life Science<sup>®</sup>***

#### **Global Headquarters**

##### **Enzo Life Sciences Inc.**

10 Executive Blvd  
Farmingdale, NY 11735  
(p) 1-800-942-0430  
(f) 1-631-694-7501  
(e) [info-usa@enzolifesciences.com](mailto:info-usa@enzolifesciences.com)

##### **Enzo Life Sciences (ELS) AG**

Industriestrasse 17, Postfach  
CH-4415 Lause / Switzerland  
(p) +41/0 61 926 89 89  
(f) +41/0 61 926 89 79  
(e) [info-ch@enzolifesciences.com](mailto:info-ch@enzolifesciences.com)

Please visit our website at [www.enzolifesciences.com](http://www.enzolifesciences.com) for additional contact information.