

## Products

pluriSpin® Human PLT Depletion	19-00002-31
--------------------------------	-------------

pluriSpin® Human PLT Depletion for processing 100 ml whole blood.

pluriSpin® Human Monocyte Enrichment	19-01001-31
pluriSpin® Human Monocyte Depletion	19-01002-31
pluriSpin® Human T Cell Enrichment	19-02001-31
pluriSpin® Human T Cell Depletion	19-02002-31
pluriSpin® Human CD4 <sup>+</sup> T Cell Enrichment	19-03001-31
pluriSpin® Human CD4 <sup>+</sup> T Cell Depletion	19-03002-31
pluriSpin® Human CD8 <sup>+</sup> T Cell Enrichment	19-04001-31
pluriSpin® Human CD8 <sup>+</sup> Cell Depletion	19-04002-31
pluriSpin® Human NK Cell Enrichment	19-05001-31
pluriSpin® Human NK Cell Depletion	19-05002-31
pluriSpin® Human B Cell Enrichment	19-06001-31
pluriSpin® Human CD19 <sup>+</sup> Cell Depletion	19-06002-31
pluriSpin® Human Granulocyte Enrichment <sup>1</sup>	19-07001-31
pluriSpin® Human CD45 Depletion	19-08001-31

All products available for processing 40 ml or 200 ml whole blood (2 ml or 10 ml vials).

<sup>1</sup> Use Leuko Spin Medium for granulocyte enrichment.

## Density Gradient Media

Leuko Spin Medium (all white blood cells)	60-00091-10
Lympho Spin Medium (PBMC)	60-00092-10
Lympho 24+ Spin Medium (PBMC from 12 - 48 hours old peripheral blood)	60-00093-10
PLT Spin Medium (Platelets)	60-00094-10

## pluriMate

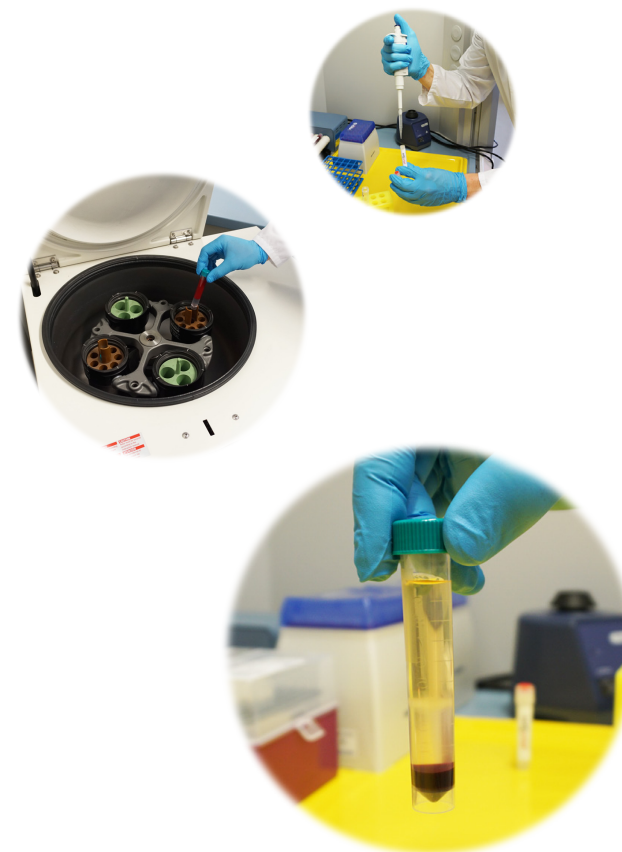
Tubes to support centrifugation process.

pluriMate-2	2 ml	44-00002-10
pluriMate-15	15 ml	44-00015-10
pluriMate-50	50 ml	44-00050-10

**IF YOU CAN HANDLE  
GRADIENT CENTRIFUGATION,  
THEN YOU CAN HANDLE  
PLURISPIN®, TOO.**

# pluriSpin

**Negative Cell Isolation  
For Untouched Cells**



### pluriSelect USA

Spring Valley, CA 91977  
USA

Phone: 619-928-9265  
support.usa@pluriselect.com

[www.pluriselect.com/plurispin.html](http://www.pluriselect.com/plurispin.html)

### pluriSelect Life Science Worldwide

Deutscher Platz 5c  
04103 Leipzig  
Germany

Phone: +49 341 333858-0  
support@pluriselect.com

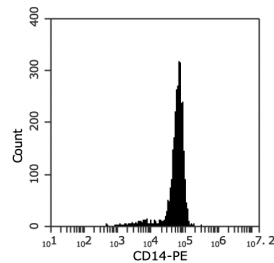
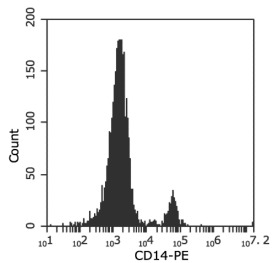
## Facts & Features

- ✓ Affordable one step negative cell separation
- ✓ Independent of RBC concentration
- ✓ Based on density centrifugation
- ✓ Untouched cells for maximum viability
- ✓ No columns, no magnets
- ✓ No training or special equipment required
- ✓ Isolate from whole blood, buffy coat or cord blood
- ✓ Remove platelet contamination with PLT Depletion

## Typical Results Using pluriSpin® Human Monocyte Enrichment

Start: 7% CD14+ cells in WB

Enriched: 88.6% CD14+ cells

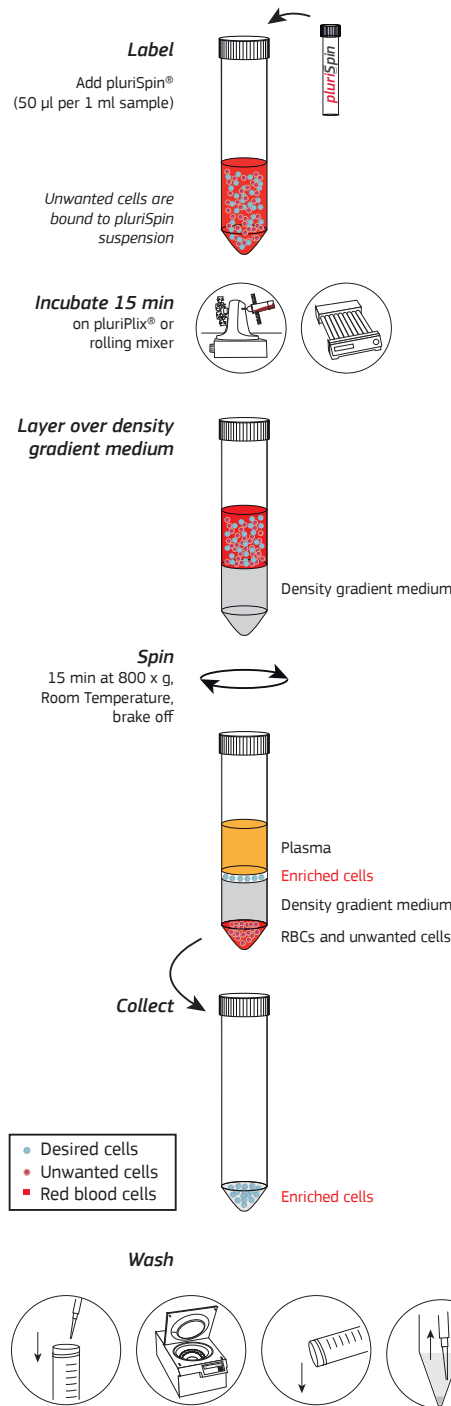


Starting with fresh peripheral blood, the CD14+ cell content of the enriched fraction is typically 84% - 92%.

## Purity

Target Cell Type	Enriched Purity	Depleted Purity
Monocytes	84% - 92%	0.2% - 1%
T cells	88% - 95%	0.2% - 2%
CD4+ T cells	88% - 94%	0.2% - 1%
CD8+ T cells	84% - 95%	0.2% - 0.7%
NK cells	75% - 90%	0.5% - 3%
B cells	75% - 85%	0.1% - 0.4%

## How It Works

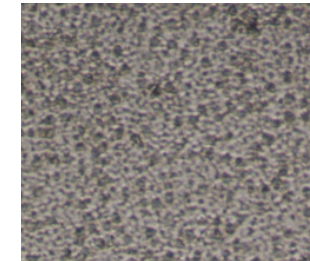


## Purity Improvement with PLT Depletion

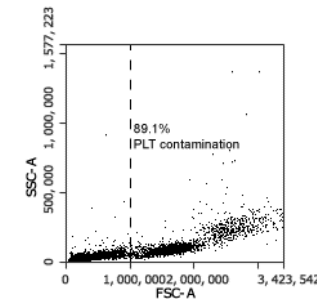
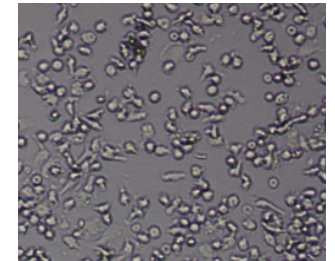
pluriSpin® Human PLT Depletion is designed to reduce platelet contamination.

It increases purity of enriched cells through a density gradient centrifugation in one step and can be combined with negative separation techniques such as pluriSpin®.

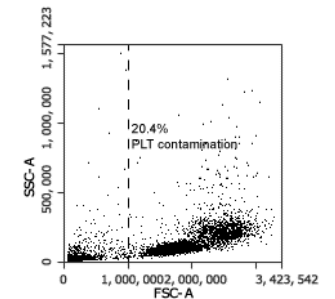
pluriSpin® Human Monocyte Enrichment



pluriSpin® Human Monocyte Enrichment & pluriSpin® Human PLT Depletion



89.1% platelet contamination



20.4% platelet contamination

## pluriMate®



pluriMate® was developed for optimal separation of leukocytes and peripheral blood mononuclear cells (PBMC) from whole blood and bone marrow.

Tubes are available in sizes 2 ml, 15 ml and 50 ml, pre-filled and unfilled.