

# Product information

## ibidi Mounting Medium



# Idea of ibidi Mounting Medium



## **Problem:**

My normal mounting medium is chemically not compatible with ibidi  $\mu$ -Slides.

I have mounting problems (handling, filling, evaporation) with my channel  $\mu$ -Slide.

How is it possible to store stained samples for a certain time?

How can I minimize photobleaching during fluorescence microscopy?

## **Solution:** ibidi Mounting Medium ...

... is especially designed for all ibidi  $\mu$ -Slides and  $\mu$ -Dishes.

... is non-drying and easy-to-use. Even with the channel slides.

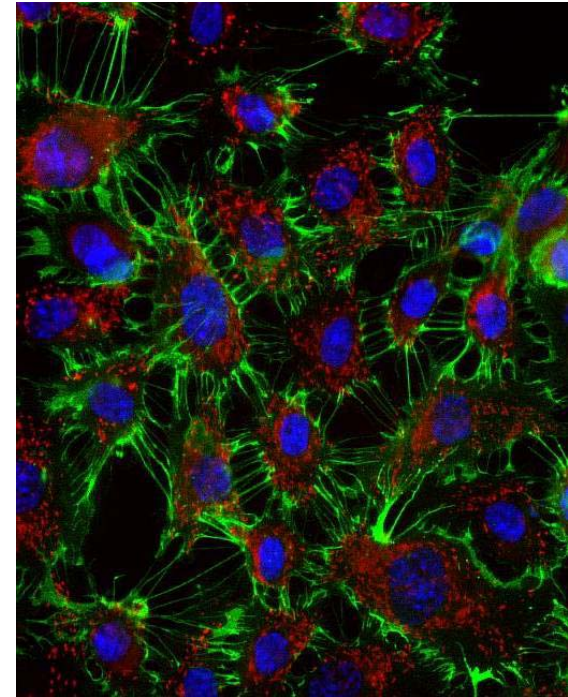
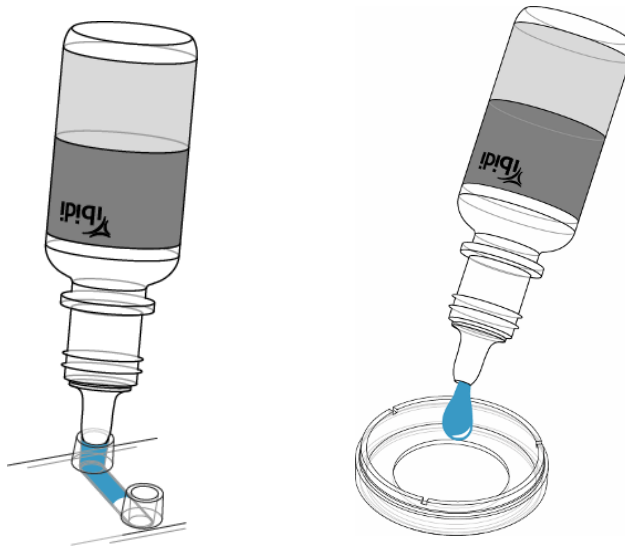
... can be used for preservation and storage of fluorescence stainings.

... contains a reagent which retards photobleaching of fluorochromes.

# Features of ibidi Mounting Medium

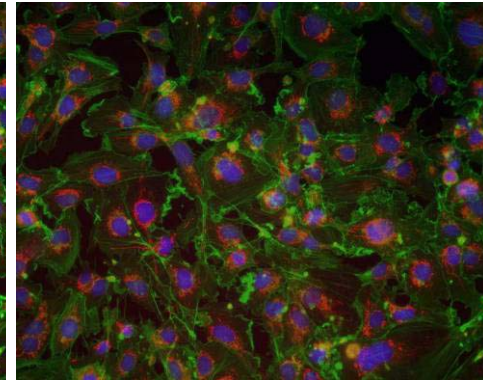
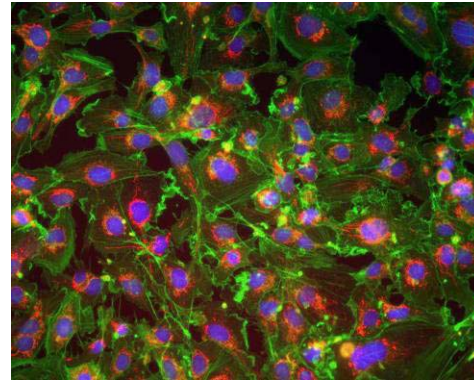
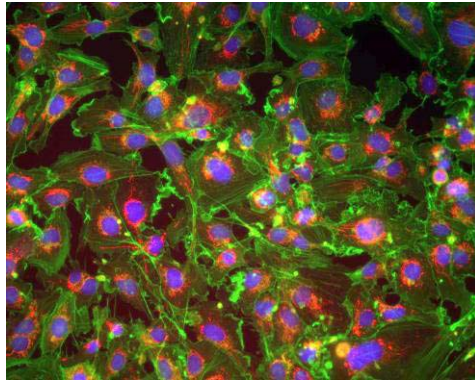


- Compatible with all ibidi  $\mu$ -Slides,  $\mu$ -Dishes, and  $\mu$ -Plates
- Dropper bottle for exact dispensing into channels or open wells
- Contains antioxidant agent which preserves fluorochromes
- No autofluorescence – bright fluorescence signals
- Non-drying and volume stabile
- Non-hardening
- Ready-to-use

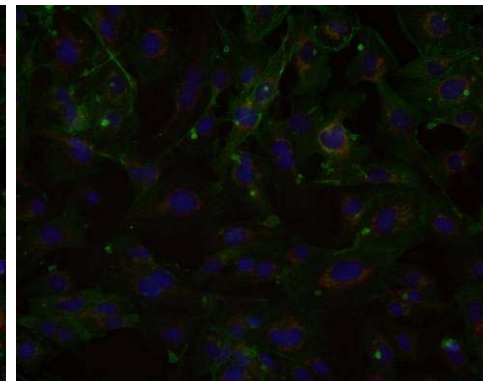
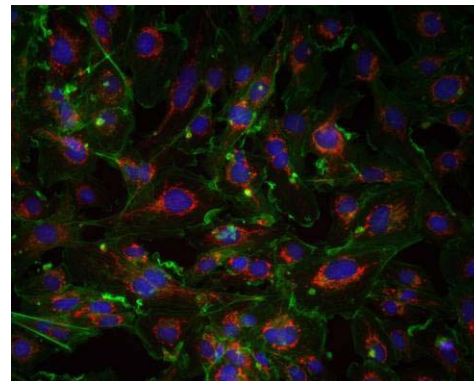
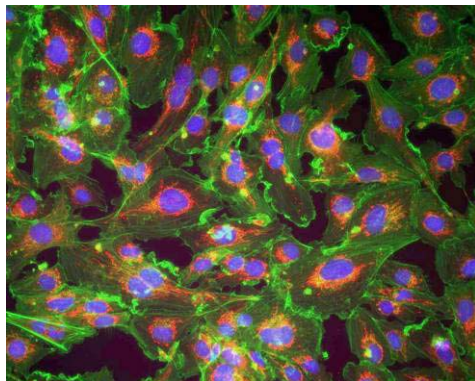


## Low photobleaching of fluorescence samples:

**ibidi Mounting  
Medium (IMM)**



**Phosphate buffered  
saline (PBS)**



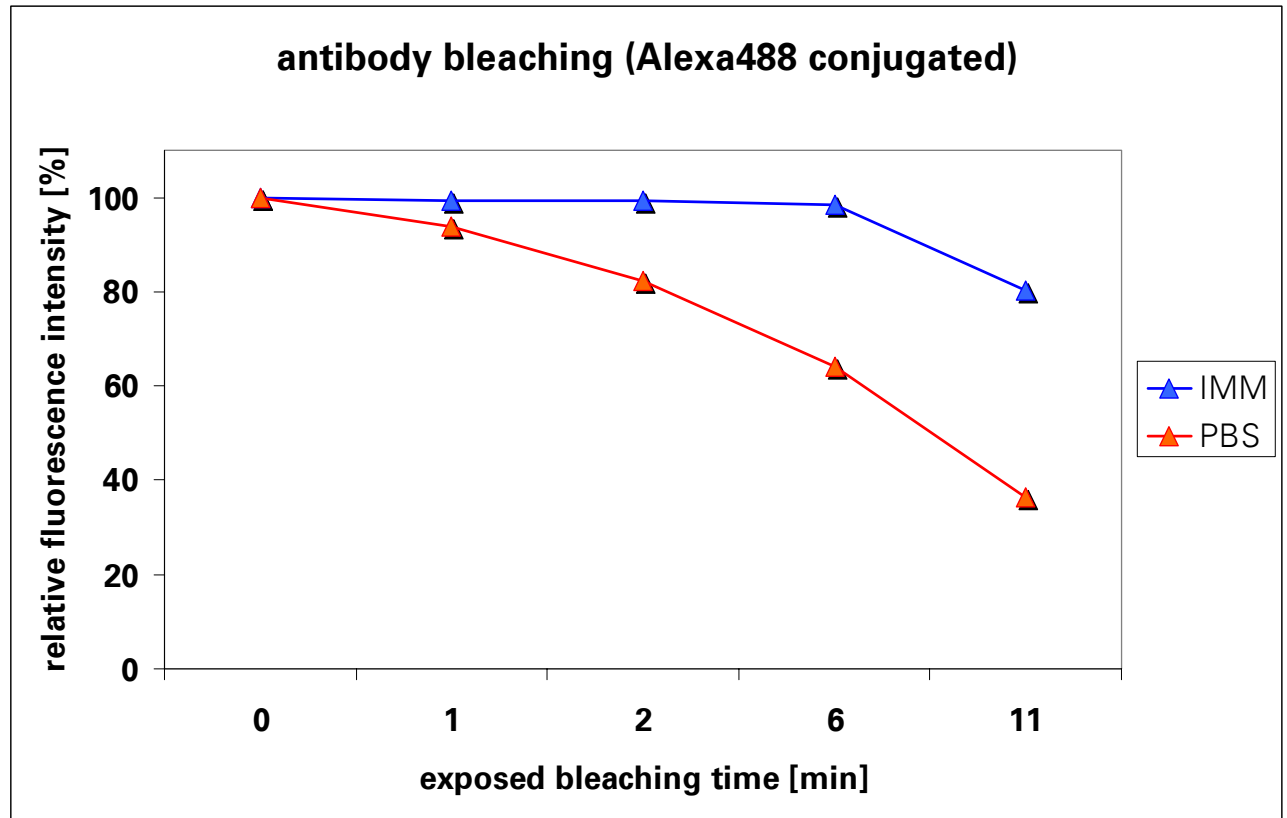
**30 sec bleaching**

**2 min bleaching**

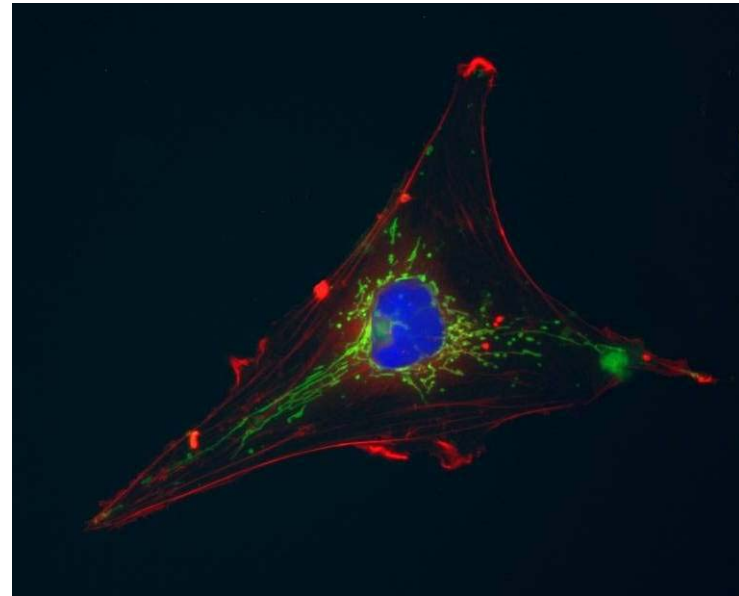
**10 min bleaching**

Immunofluorescence of human microvascular endothelial cells stained with DAPI (DNA), Alexa 488 phalloidin (F-Actin) and MitoTracker Red (Mitochondria)

## Low bleaching of fluorochromes in stained samples



- Storage of stained slides and dishes for days and weeks
- Widefield fluorescence and confocal microscopy
- Immunofluorescence assays



Free sample program



**Get free samples on:**

**www..ibidi.com**

